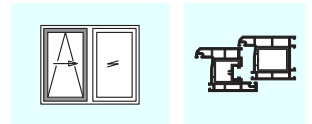


PSK PORTAL 100 KF PLUS

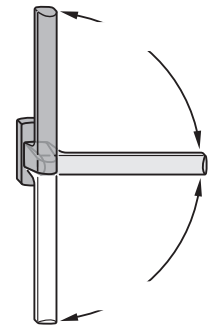
Parallel tilt & slide hardware
for PVCu elements with 12 mm cavity, standard operating sequence

Surface TS



... Product benefits:

- Basic security = standard
- Total frame to sash clearance: 122 mm
- Simple, efficient stop
- Standard operating sequence, other operating sequences possible
- Also for systems with a large sash depth



Operating sequence:
standard

Size range

Sash rebate width	(mm)	670 to 1,200 ¹⁾
Sash rebate height for scheme A, scheme C variant 1, G and K	(mm)	840 to 2,360
Sash rebate height for scheme C variant 2	(mm)	1,000 to 2,360
Exterior width of frame	(mm)	Depends on the profile system, determined by the sash rebate width, for scheme A: max. 3,460
Sash weight	(kg)	Max. 100
Backset (standard)	(mm)	16
Backset with lockable gear		25 to 50
Handle height, variable/centre	(mm)	420 – 1180
Total frame to sash clearance	(mm)	122

1) For sash rebate widths that are < 944 mm, the sash rebate height must not exceed 2.5x the sash rebate width.

The size ranges specified above must not be exceeded.

Furthermore, for the SIEGENIA-AUBI PSK PORTAL 100 KF PLUS hardware, the specifications provided by the profile manufacturers or system owners also apply, especially any information regarding possible restrictions on sash dimensions, sash weight and lock spacing.

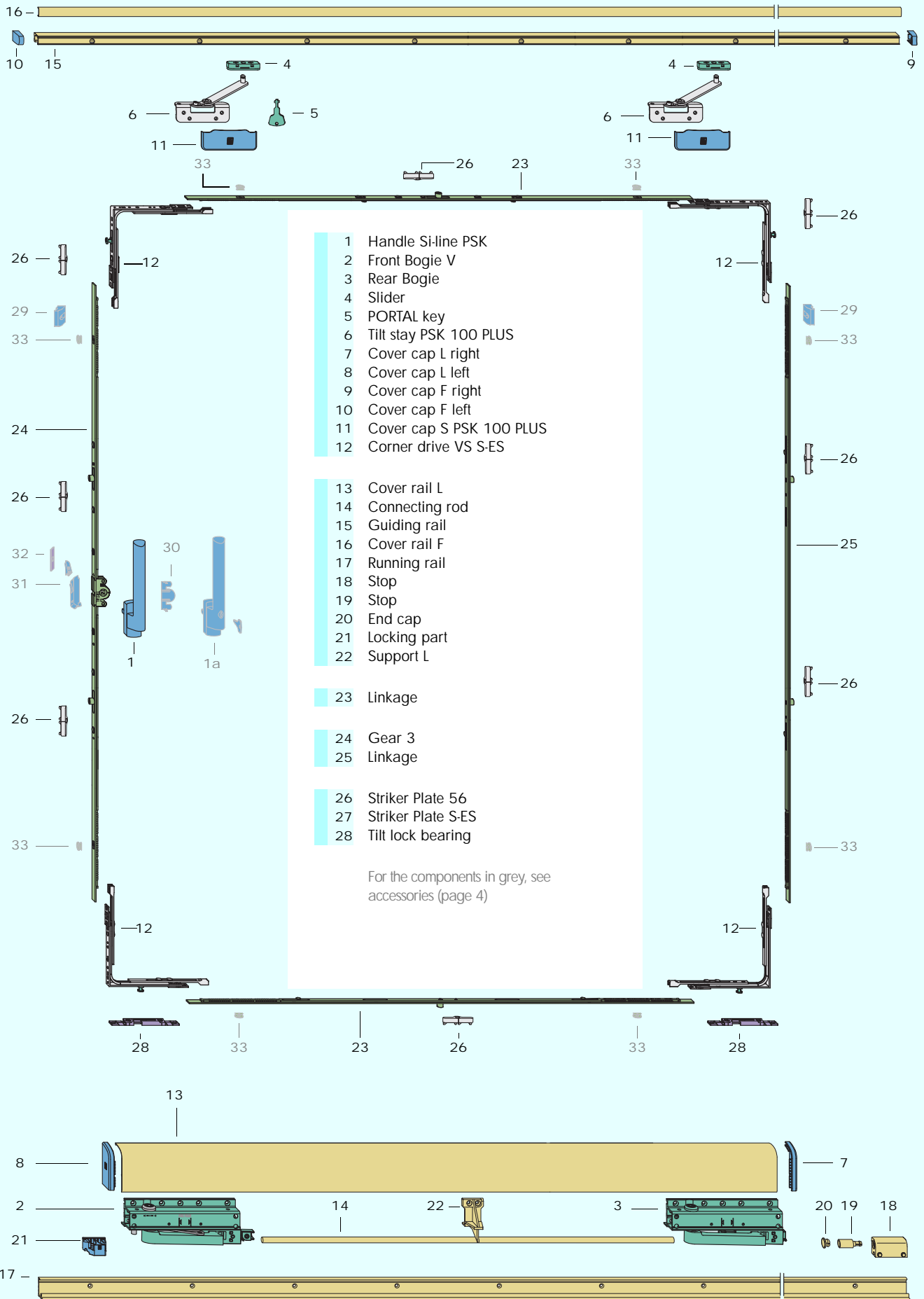
All special manufacturing specifications or processing guidelines must be explicitly observed.

Table of contents

Size range	Page 1	Vertical section, top	Page 11
Fittings	Page 2	Horizontal section (I)	Page 12
List of fittings	Page 3	Horizontal section (II)	Page 13
List of fittings (continued)	Page 4	Window frame: Frame part dimensions for standard operating sequence	Page 14
Important instructions, abbreviations	Page 5	Window frame: Mounting the running rail and guiding rail	Page 15
PZ.. accessories: List of fittings and scheme overview	Page 6	Vertical section, bottom	Page 16
PZ.. accessories: Installation situation	Page 7	Preparing the sash frame	Page 17
Scheme C, general information	Page 8	Sash frame: Mounting ZV (FAVORIT components)	Page 18
Scheme C variant 1 and 2	Page 9	Sash frame: Mounting the PSK components	Page 19
List of fittings, scheme C	Page 10	Inserting sliding sashes and adjustment possibilities	Page 20

Assembly instructions
 PSKen4009

PSK PORTAL 100 KF PLUS Fittings



PSK PORTAL 100 KF PLUS List of fittings

Item	Quantity	Material description	Material number			
			silver	white	brown	
generally required	1	Handle Si-line PSK 31	872086	858264	895634	
		Handle Si-line FAVORIT 31	864715	844052	895979	
	1	Carton PSK 100 PLUS Bogie consisting of:		PMKJ0051-100010 PMKJ0052-100010		
	2	1	Front Bogie V (PSK 100) right front			
			left front			
	3	1	Rear Bogie (PSK 100) right back			
			left back			
	4	1	Bag of accessories PSK- PORTAL consisting of:		PMZJ0030-000010	
	4	2	Slider			
	5	1	PORTAL key			
	6	2	Tilt stay PSK 100 PLUS		PSKJ0050-100010	
	7	1	Bag - Cover cap - PSK 100 PLUS consisting of:	PMAJ0030-025050	PMAJ0030-002050	PMAJ0030-012050
7	1	Cover cap L right				
8	1	Cover cap L left				
9	1	Cover cap F right				
10	1	Cover cap F left				
11	2	Cover cap S PSK 100 PLUS				
12	4	Corner drive VS S-ES		FEUL0090-100010		
depending on FFB and RAB	1	Profile set PSK PLUS				
		Size ¹⁾ Length(in mm) FFB (in mm) RAB (in mm)				
		Sz. 87/200 670 to 870 to 2,000	PMPJ0100-525010	PMPJ0100-502010	PMPJ0100-512010	
		Sz. 107/240 871 to 1,070 2,001 to 2,400	PMPJ0110-525010	PMPJ0110-502010	PMPJ0110-512010	
		Sz. 130/286 1,071 to 1,300 2,401 to 2,860	PMPJ0120-525010	PMPJ0120-502010	PMPJ0120-512010	
		Sz. 160/346 1,301 to 1,600 2,861 to 3,460	PMPJ0130-525010	PMPJ0130-502010	PMPJ0130-512010	
	13	Cover rail L				
		Sz. 87 865				
		Sz. 107 1,065				
		Sz. 130 1,295				
		Sz. 160 1,550				
	14	Connecting rod				
		Sz. 87 585				
		Sz. 107 785				
		Sz. 130 1,015				
		Sz. 160 1,270				
	15	Guiding rail				
	Sz. 200 2,000					
	Sz. 240 2,400					
	Sz. 286 2,860					
	Sz. 346 3,460					
16	Cover rail F					
	Sz. 200 2,000					
	Sz. 240 2,400					
	Sz. 286 2,860					
	Sz. 346 3,460					
17	Running rail					
	Sz. 200 2,000					
	Sz. 240 2,400					
	Sz. 286 2,860					
	Sz. 346 3,460					
	Bag of cover caps-Set PSK 200/160 consisting of:					
no illus.		Cover cap L right				
no illus.		Cover cap L left				
no illus.		Cover cap F right				
no illus.		Cover cap F left				
	1	Bag of running rail accessories: PSK 200/160 consisting of:	PMZJ0050-100010	PMZJ0050-100010	PMZJ0050-012010	
18	1	Stop				
19	1	Stop				
20	1	End cap				
21	1	Locking part				
22	1..2	Support L		809924		
depending on FFB	23	2	Linkage (with standard locking cam)			
			Size FFB (in mm)			
		1	670 to 1,100	-	703816	
		2 MV	1,000 to 1,460	1	703830	
		3 MV	1,461 to 1,600	1	703847	
		Linkage S-ES (with mushroom cam)				
		Size FFB (in mm)				
		1 MV	670 to 1,100	1	707272	
		2 MV	1,000 to 1,460	1	707289	
		3/3 MV	1,461 to 1,600	3	719701	

1) To precisely determine the required size, calculate the dimensions of FFB and RAB.

PSK PORTAL 100 KF PLUS List of fittings (continued)

Item	Quantity	Material description	Material number					
			silver	white	brown			
depending on FFH	24	Gear 3 (with standard locking cam)	Size	Handle height (in mm)FFH (in mm)		-		
			1	420 to 550	840 to 1,100		706992	
			2 MV	500 to 730	1,000 to 1,460		707012	
			3 MV	730 to 960	1,461 to 1,920		707029	
			4 TL	940 to 1,180	1,880 to 2,360		707036	
			4a TL	940 to 1,180	1,650 to 2,150	701829		
	24	1	Gear 3 S-ES A0103 (with mushroom cam)	Size	Handle height (in mm)FFH (in mm)		1	
				1a MV	420 to 590	840 to 1,180		719602
				2/2 MV	500 to 730	1,000 to 1,460		719619
				3/2 MV	730 to 960	1,461 to 1,920		719626
4 TL				940 to 1,180	1,880 to 2,360	719633		
depending on profile system	25	Linkage (with standard locking cam)	Size	FFH (in mm)		-		
			1	840 to 1,100			703816	
			2 MV	1,000 to 1,460			703830	
			3 MV	1,461 to 1,920			703847	
			4 TL	1,880 to 2,360			703854	
			4a TL	1,650 to 2,150		703861		
	25	1	Linkage S-ES (with mushroom cam)	Size	FFH (in mm)		1	
				1 MV	840 to 1,100			707272
				2 MV	1,000 to 1,460			707289
				3/3 MV	1,461 to 1,920			719701
4 TL				1,880 to 2,360		713662		
26	4...10	Striker Plate 56 (for standard locking cam)	A....			See profile data sheet		
27	4...10	Striker Plate S-ES (für Pilzkopfzapfen)	A....			See profile data sheet		
28	2	Tilt lock bearing	A...			See profile data sheet		

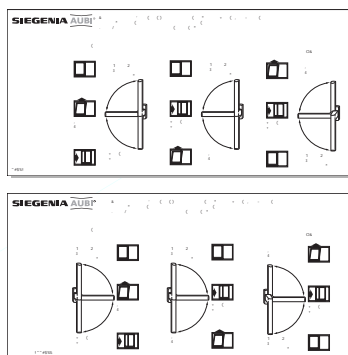
Accessories

Item	Quantity	Material description	Material number			
			silver	RAL 9003 white	RAL 8022 brown	
Accessories	29	Distance piece Contains 10 pieces	A0807 Eurogroove 7/8x4	301418		
			A1361 Eurofold 18/8 and 20/8	301401		
	1	Si-line PSK handle, lockable	31	872093	858318	895641
			31 Si-line FAVORIT handle, lockable	868249	852392	-
	30	1	Anti-drill guard E	TGBS0010-0G9010		
	31	1	Bag mishandling device	Contains 25 pieces		
	32	1	Stop (for mishandling device)	A0800 Eurogroove 7/8x4	289983	
				A1360 Eurofold 18/8 and 20/8	703410	
	no illus.	1	S-ES linkage	230 MV	703366	
	no illus.	1	UE linkage	230 MV/75	710272	
33	0...8	Location piece		FZZS0010-100010		
no illus.	1	Si-line FAVORIT handle, removable		702543		
		Si-line cover rose, inside		-	800249	-
			PHZB0020-525010	PHZB0020-502010	PHZB0020-502010	

Important instructions

- Observe our "Hardware for Sliding Doors and Windows" product information.
 - The size ranges specified on page 1 apply for the SIEGENIA-AUBI PSK PORTAL 100 KF PLUS hardware. Furthermore, the specifications provided by the profile manufacturers or system owners also apply, especially any information regarding possible restrictions on sash dimensions, sash weight and lock spacing. Observe any special manufacturing specifications or processing guidelines explicitly. The specifications given for screw-in speeds and torques must be adhered to.
 - If the parallel sliding tilt element is subjected to excessive strain, the sash can, in the worst case, jump and fall out of its guide and, in doing so, cause serious injuries. If the parallel sliding tilt element is expected to be subjected to excessive strain due to being closed with force (use in schools, nursery schools, etc.), appropriate measures must be taken to prevent this from happening, for example:
 - moving the stop bracket to reduce the opening width or
 - installing a lockable handle to prevent unauthorised use.
 - If there is any doubt, be sure to consult with your SIEGENIA-AUBI sales consultant.
 - The steel fittings specified in these assembly instructions are electro-galvanised and then finished using a special technique. They are not suited for use:
 - in damp locations
 - in environments where the air contains aggressive, corrosive components
 - in environments where the air contains salt
- Please contact your SIEGENIA-AUBI sales consultant in such situations.
- Select your complete set of fittings only from the SIEGENIA-AUBI range of fittings. Otherwise, damage could occur, for which we accept no liability.
 - All fittings must be properly mounted as per the description on pages 11 to 20. Do not overwind the screws.
 - The parallel sliding tilt elements may be surface treated before the fittings are assembled only. Treating the surface at a later stage can reduce the functional capacity of the fittings. We are not obligated to honour the warranty in such cases.
 - When inserting blocks, be sure to observe technical guideline no. 3 published by the German Association of Trade Guilds for the Glazing Trade [Glaserhandwerk], entitled "Blocking glazing units" [Klotzung von Verglasungseinheiten].
 - Never use acid cure sealants as they may cause the fittings to corrode.
 - Keep the sliding bump (on the running rail) and all rebates free from deposits and dirt, especially from remnants of cement and plaster. Avoid exposing the fittings directly to water and do not let cleaning agents come into contact with the fittings.
 - Attach the instruction label (sliding direction DIN left or DIN right) to the integrated parallel sliding tilt sash in a clearly visible location. The instruction label is located in the "Krt. Laufwagen PSK 100 PLUS".

Remove the applicable segment from the respective label and stick it to the window sash.



Disclaimer of liability

We assume no liability for loss of function or damage to the fittings (including the fitted parallel sliding tilt elements) resulting from insufficient tendering, failure to follow these assembly instructions or which result from force being applied to the fittings (e.g. through improper use).

We assume no liability for loss of function and damage to the fittings (as well as to the fitted parallel sliding tilt elements), if:

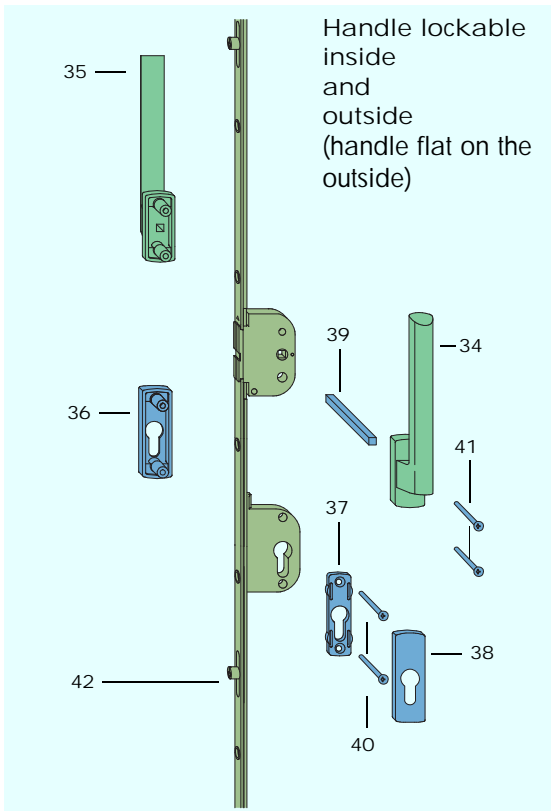
- assembly is not undertaken in accordance with our assembly instructions and generally recognised technical standards and regulations;
- the fittings are damaged through the application of force, misuse or external influences;
- unauthorised modifications have been made to the fittings;
- fittings from other series or manufacturers that have not been approved for use are used; the same applies to non-approved combinations of fittings with different surface finishes;
- the fittings have not been serviced at least once a year in accordance with our maintenance instructions PSK PORTAL 100 PLUS;
- the end customer has not been informed of and appropriately instructed with respect to our maintenance instructions.
- Please note that the fittings must be regularly cleaned; in particular the guiding rail and the running rail must be kept clean in order to ensure failure-free operation.

Abbreviations

The following abbreviations are used in these assembly instructions:

BSO	Hinge side, top	FFH	Sash rebate height	L	Bogie wheels	RAB	Exterior width of frame	V	Front
BSU	Hinge side, bottom	FH	Sash height	M	Middle	RAH	Exterior height of frame	VSO	Locking side, top
EB	Drill jig (combi jig)	FHD	Sash timber width	MV	Centre lock	RFB	Frame rebate width	VSU	Locking side, bottom
F	Guiding rail	G	Handle height	OKFF	Finished floor level	S	Heavy version	ZV	Central locking part
FB	Sash width	GH	Handle for drive gear	OS	Without lock	SES	Steel-enhanced security		
FFB	Sash rebate width	H	Rear	PZ	Profile cylinder	SW	Key dimension		

PSK PORTAL 100 KF PLUS PZ-.. accessories: List of fittings and scheme overview

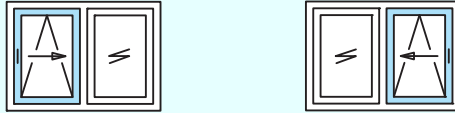


Components from the list of fittings on pages 3 and 4 are required for the complete set.

Scheme overview

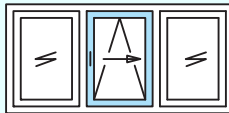
DIN left or DIN right

Scheme A



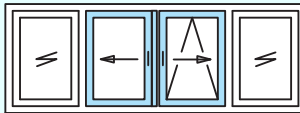
1 sliding sash/1 stationary sash*

Scheme G



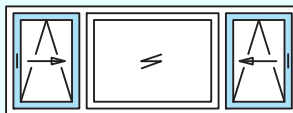
1 sliding sash/2 stationary sashes*

Scheme C



2 sliding sashes/2 stationary sashes*

Scheme K



2 sliding sashes/1 stationary sash

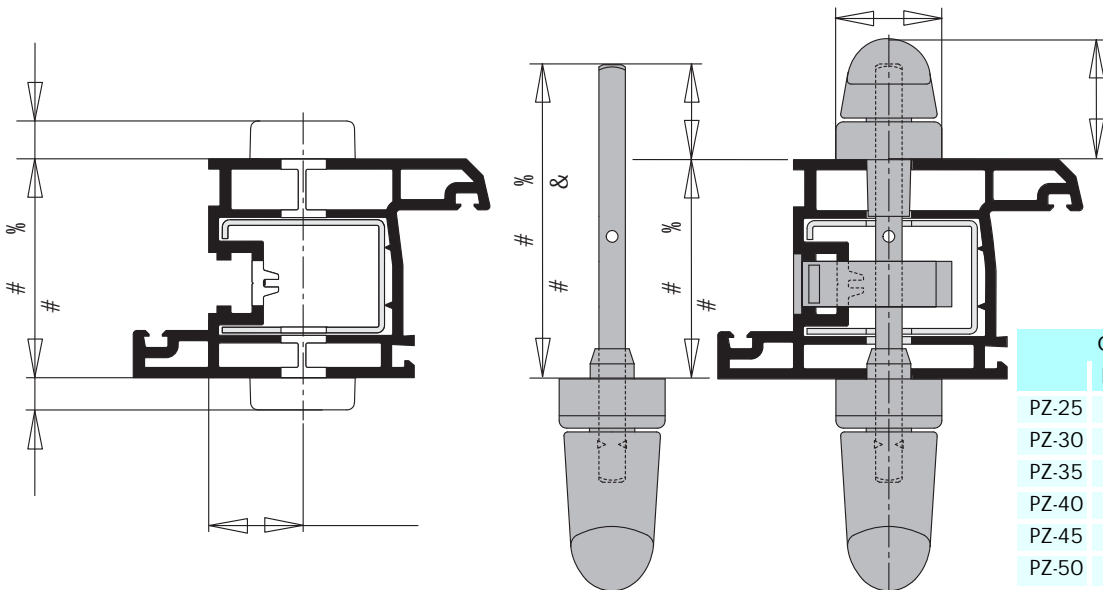
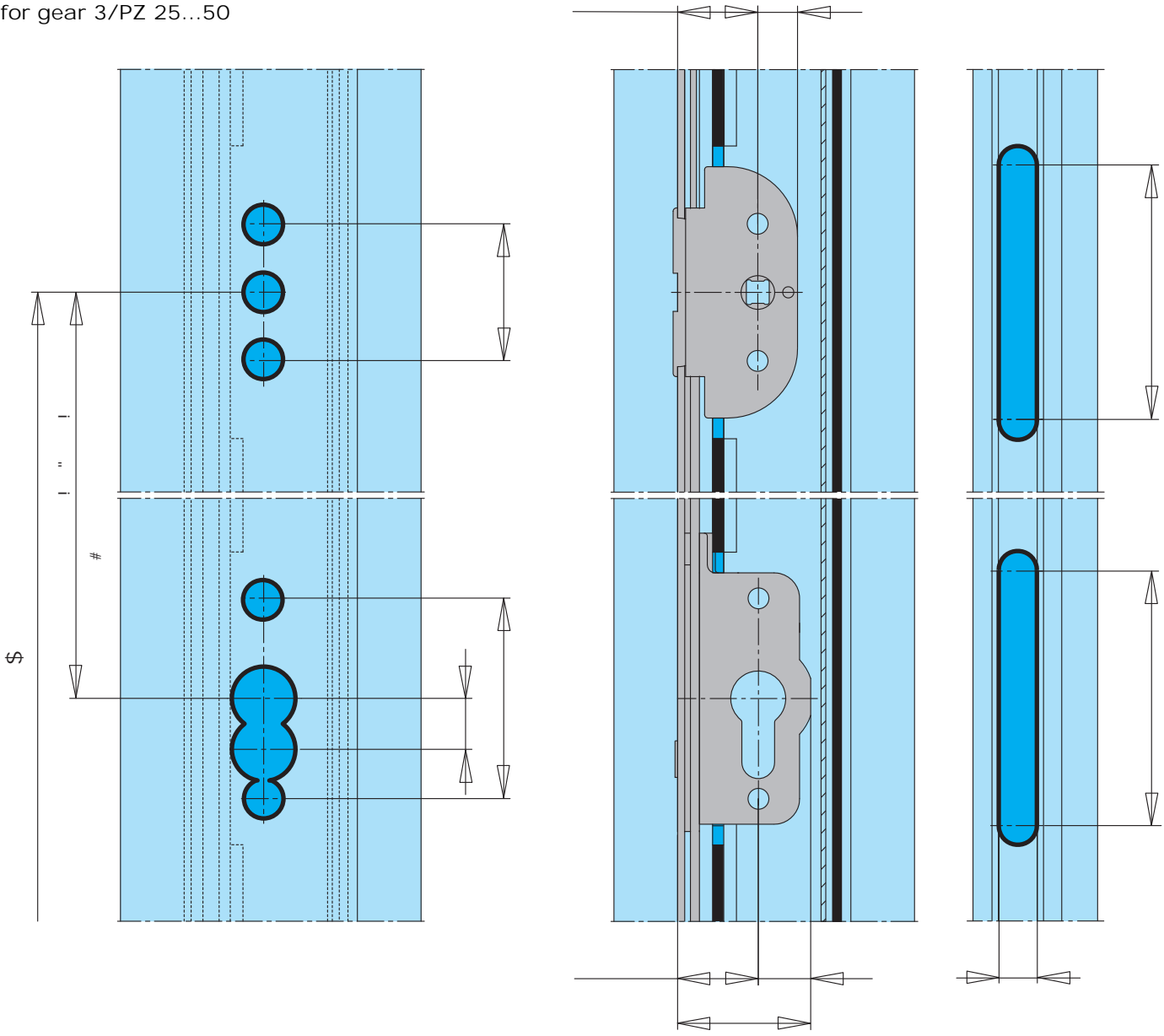
*) It is also possible to use turning sashes instead of stationary sashes. Turning sashes with rose inside only and removable handle (see price list).

Item	Quantity	Material description	Material number		
			silver	RAL 9003 white	RAL 8022 brown
	1	Carton Handle Si-line PSK-PZ i. u. a. consisting of:	262191	262214	306819
34	1	Handle Si-line PSK without square	890111	890135	890658
35	1	Handle Si-line PSK exterior flat	874257	874271	890665
36	1	Rose Si-line PZ exterior	870679	870723	890672
	1	Bag - cover cap Si-line PZ consisting of:	871447	871492	890719
37	1	Rose Si-line PZ interior			
38	1	Cover cap Si-line PZ interior			
	1	Accessories Fav. TL/PZ i. u. a. Sash profile thickness (mm) consisting of:		ZMZP0030-100010 ZMZP0020-100010 ZMZP0010-100010	
39	1	Square bolt Length (mm) Sash profile thickness (mm)		ZHW0010-100010 ZHW0020-100010 ZHW0030-100010	
40	2	Countersunk screw M 5 x .. Length (mm) Sash profile thickness (mm)		KDNA0170-100010 KDNA0190-100010 KDNA0110-100010	
41	2	Countersunk screw M 5 x .. Length (mm) Sash profile thickness (mm)		KDNA0380-100010 KDNA0100-100010 KDNA0120-100010	
42	1	Gear 3/PZ - (with standard-locking cam) Size Backset (in mm) FFH (in mm)	2 2 2	701928 700433 701959	

Gear size for FFH 840 - 1920, see price list

PSK PORTAL 100 KF PLUS PZ-.. accessories: Installation situation

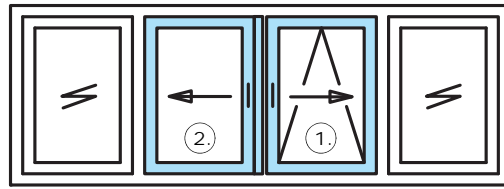
Drill holes and milling groove
for gear 3/PZ 25...50



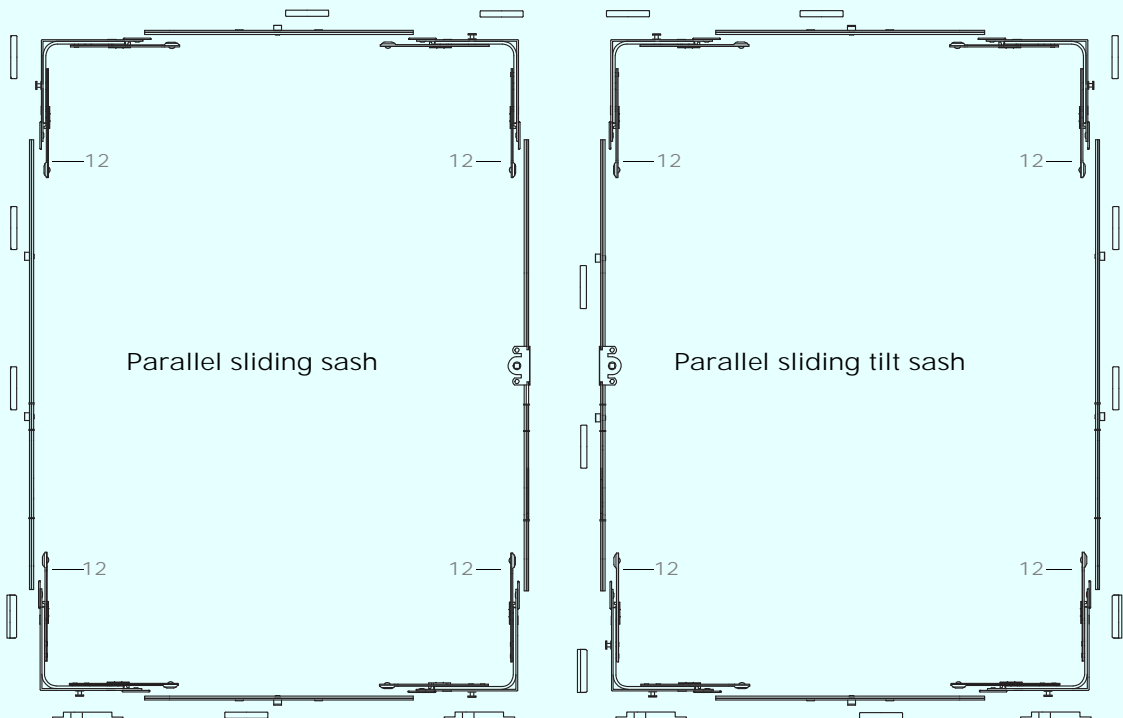
Gear dimensions				
	Backset	A1	A2	B
PZ-25	25	12.5	16.5	41.5
PZ-30	30	12.5	16.5	46.5
PZ-35	35	12.5	16.5	51.5
PZ-40	40	12.5	16.5	56.5
PZ-45	45	12.5	16.5	61.5
PZ-50	50	12.5	16.5	66.5

PSK PORTAL 100 KF PLUS Scheme C, general information

Scheme C General information



2 sliding sashes/2 stationary sashes



Important: Main and secondary sash must be labelled accordingly to prevent faulty operation.

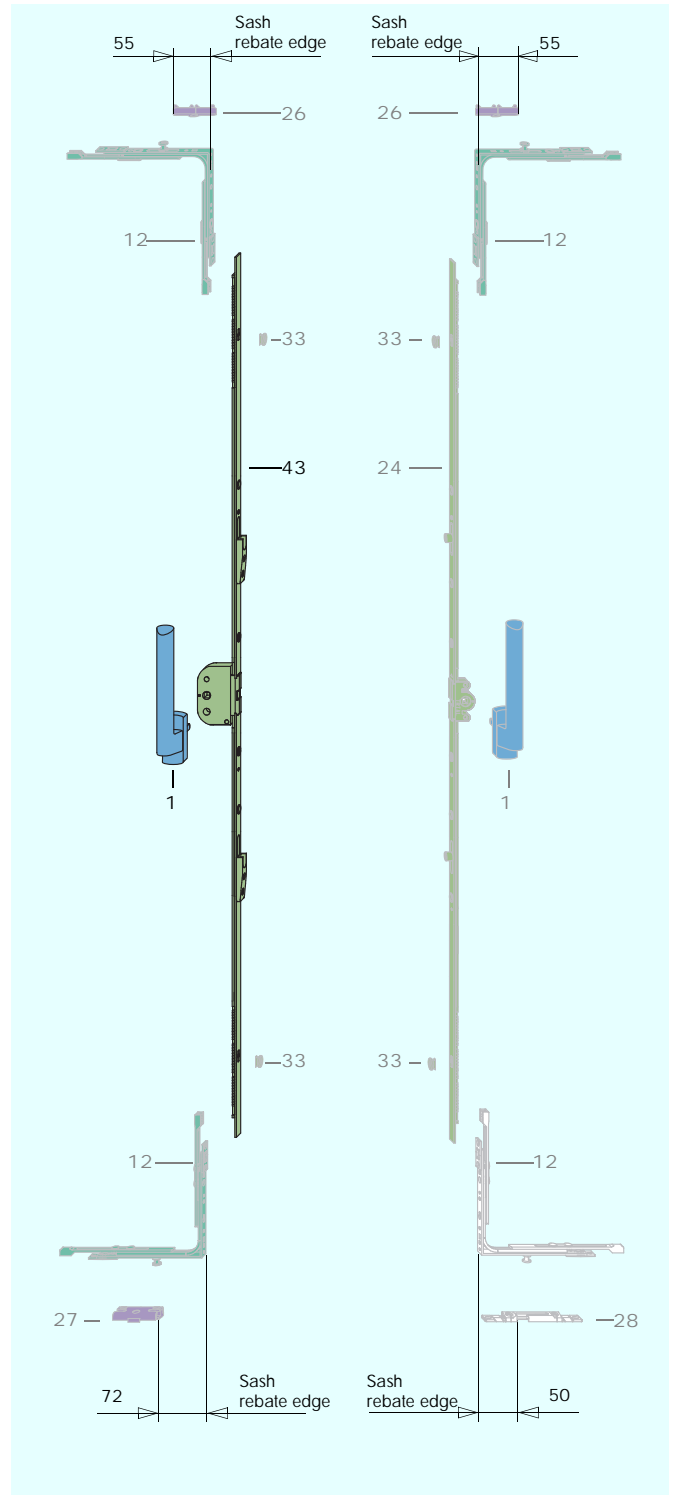
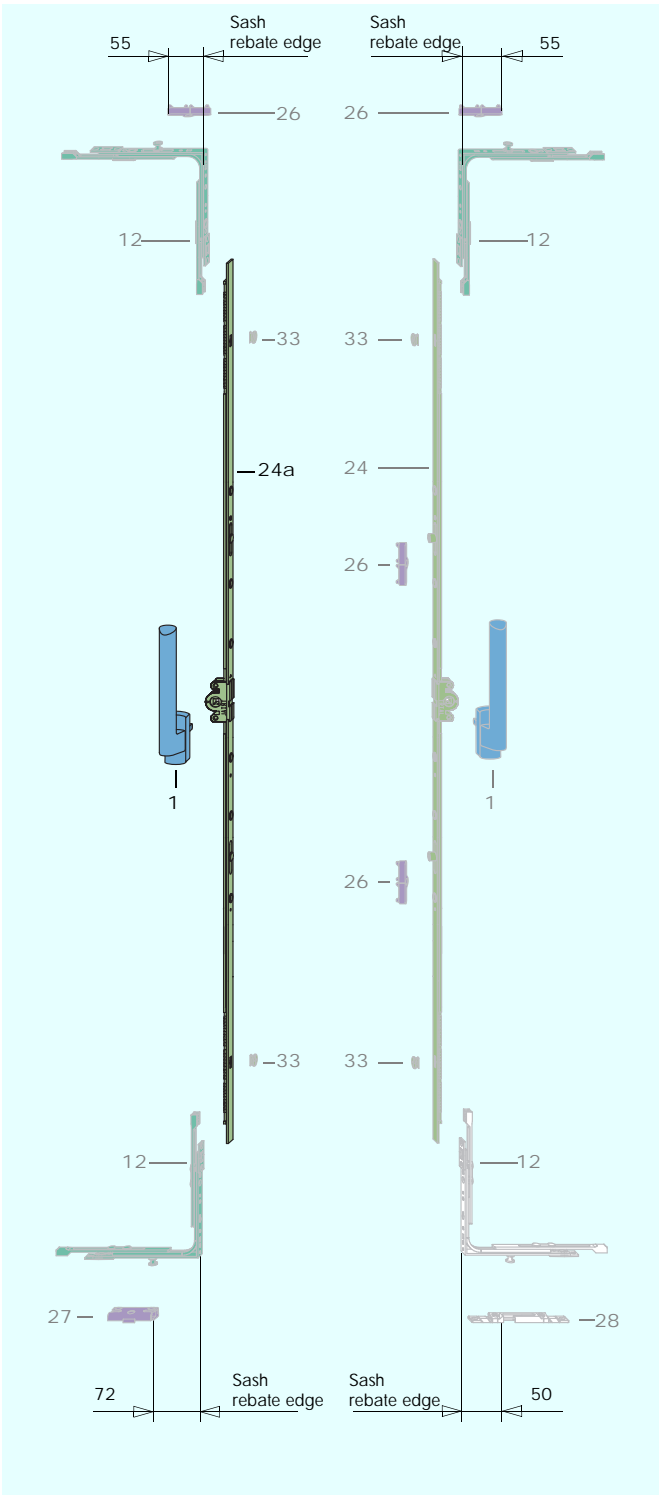
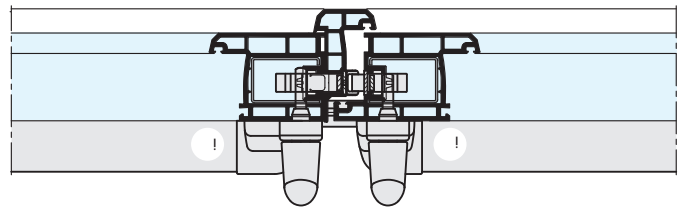
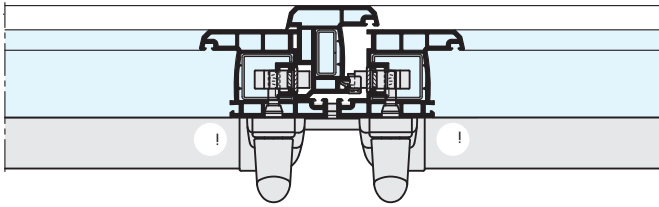
The sliding sashes may only be operated in the order specified below.

- | | | |
|----------|----------------------|----|
| Opening: | Main sash first | 1. |
| | Then secondary sash | 2. |
| Closing: | Secondary sash first | 2. |
| | Then main sash | 1. |

PSK PORTAL 100 KF PLUS Scheme C variant 1 and 2

Scheme C variant 1
with screwed-on secondary sash profile
and gear 3 also in the secondary sash

Scheme C variant 2
with opposing fitting groove and
gear 3/..-M5 "C" in the secondary sash

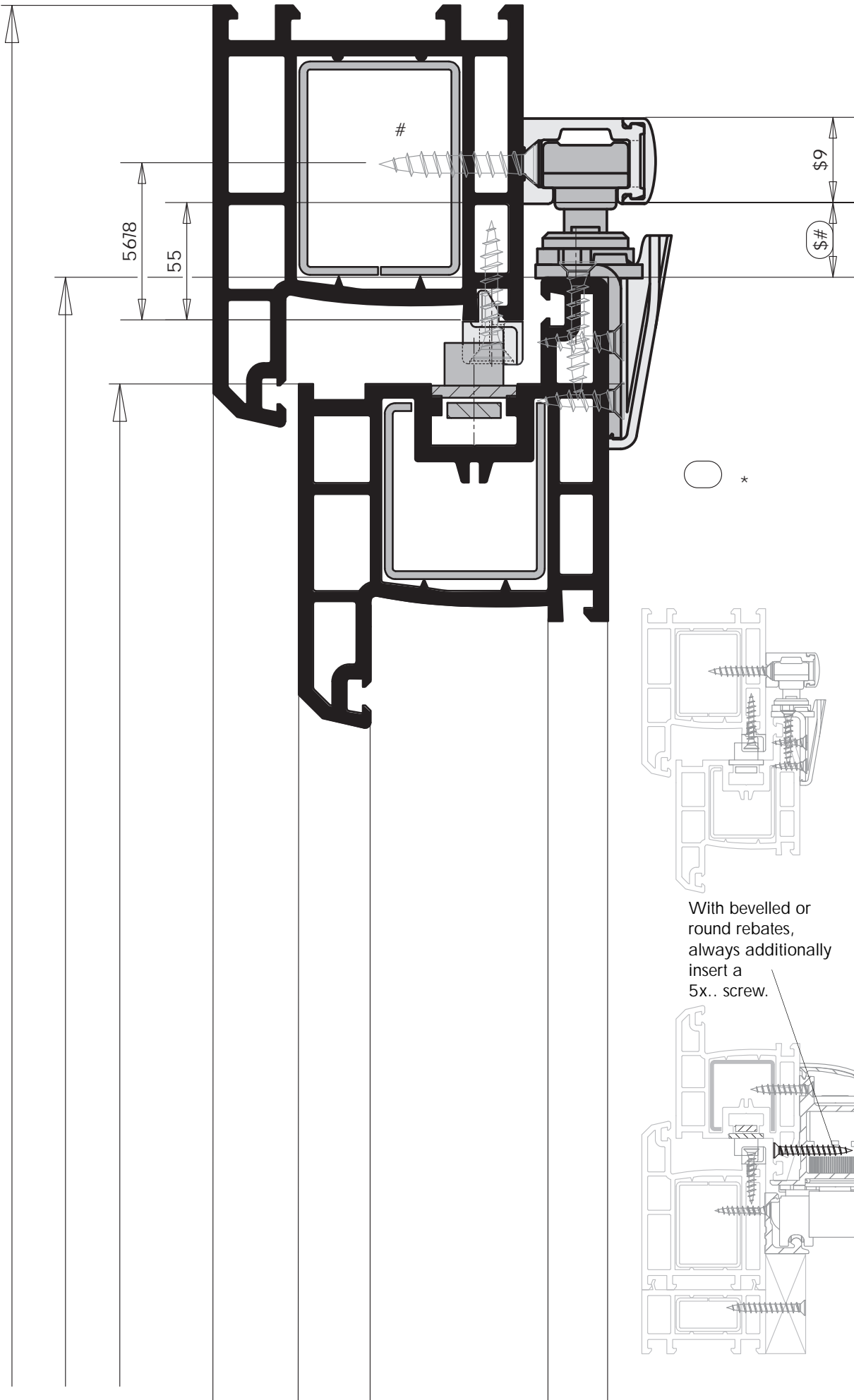


PSK PORTAL 100 KF PLUS List of fittings, scheme C

Item	Quantity Variant		Material description	Material number				
	1	2		silver	RAL 9003 white	RAL 8022 brown		
gen.	1	2	Handle Si-line PSK 31	872086	858264	895634		
			Handle Si-line FAVORIT 31	864715	844052	-		
	2..5	1	Carton PSK 100 PLUS Bogie right		PMKJ0051-100010			
		1	left		PMKJ0052-100010			
	6	4	Tilt stay PSK 100 PLUS		PSKJ0050-100010			
7..11	2	Bag - Cover cap - PSK 100 PLUS	PMAJ0030-024050	PMAJ0030-004050	PMAJ0030-012050			
12	8	Bag - Cover cap - PSK 100 PLUS		FEUL0090-100010				
FFB and RAB	13..22	2 ¹⁾	Profile set PSK PLUS					
		2 ¹⁾	Size ²⁾ Length (in mm) FFB (in mm) RAB (in mm)					
			Sz. 87/200 670 to 870 to 2,000	PMPJ0100-525010	PMPJ0100-502010	PMPJ0100-512010		
			Sz. 107/240 871 to 1,070 2,001 to 2,400	PMPJ0110-525010	PMPJ0110-502010	PMPJ0110-512010		
			Sz. 130/286 1,071 to 1,300 2,401 to 2,860	PMPJ0120-525010	PMPJ0120-502010	PMPJ0120-512010		
		Sz. 160/346 1,301 to 1,600 2,861 to 3,460	PMPJ0130-525010	PMPJ0130-502010	PMPJ0130-512010			
depending on FFB	23	4	Linkage (with standard locking cams)	Size	FFB (in mm)			
				1	670 to 1,100	703816		
				2 MV	1,000 to 1,460	703830		
				3 MV	1,461 to 1,600	703847		
				Size	FFB (in mm)			
				1 MV	670 to 1,100	707272		
2 MV	1,000 to 1,460	707289						
3/3 MV	1,461 to 1,600	719701						
depending on FFH	24	1	Gear 3 (with standard locking cams)	Size	Handle height (in mm)	FFH (in mm)		
				1	420 to 550	840 to 1,100	706992	
				1a MV	420 to 590	840 to 1,180	707005	
				2 MV	500 to 730	1,000 to 1,460	707012	
				3 MV	730 to 960	1,461 to 1,920	707029	
				4 TL	940 to 1,180	1,880 to 2,360	707036	
	4a TL	940 to 1,180	1,650 to 2,150	701829				
	24a	1	-	Gear 3 S-ES A0103 (with mushroom head cams)	Size	Handle height (in mm)	FFH (in mm)	
					1a MV	420 to 590	840 to 1,180	719602
					2/2 MV	500 to 730	1,000 to 1,460	719619
					3/2 MV	730 to 960	1,461 to 1,920	719626
					4 TL	940 to 1,180	1,880 to 2,360	719633
Size					Handle height (in mm)	FFH (in mm)		
1a	420 to 590	840 to 1,180	716823					
2	500 to 730	1,000 to 1,460	716786					
3	730 to 960	1,461 to 1,920	707906					
4 TL	940 to 1,180	1,880 to 2,360	707913					
43	-	1	Gear 3/30-M5 „C“	Size	Handle height (in mm)	FFH (in mm)		
				2 MV	500 to 730	1,000 to 1,460	712481	
				3 MV	730 to 960	1,461 to 1,920	PGVE0010-100010	
				4 TL	940 to 1,180	1,880 to 2,360	712504	
				4a TL	940 to 1,180	1,650 to 2,150	712597	
				4 TL	940 to 1,180	1,880 to 2,360	PGVE0020-100010	
25	2	2	Linkage (with standard locking cams)	Size	FFH (in mm)			
				1	840 to 1,100	703816		
				2 MV	1,000 to 1,460	703830		
				3 MV	1,461 to 1,920	703847		
				4 TL	1,880 to 2,360	703854		
				4a TL	1,650 to 2,150	703861		
25	2	2	Linkage S-ES (with mushroom head cams)	Size	FFB (in mm)			
				1 MV	840 to 1,100	707272		
				2 MV	1,000 to 1,460	707289		
				3/3 MV	1,461 to 1,920	719701		
				4 TL	1,880 to 2,360	713662		
				Size	FFB (in mm)			
1	840 to 1,100	703816						
2	1,000 to 1,460	703830						
3	1,461 to 1,920	703847						
4	1,880 to 2,360	703854						
depending on profile system	26	8..18	Striker plate 56 (for standard locking cams)	A....		See profile data sheet		
	27	11..15	Striker plate S-ES (for mushroom head cams)	A....		See profile data sheet		
	28	4	Tilt lock bearing	A...		See profile data sheet		

- 1) Symmetrical design; point of separation must be between the sliding sashes.
- 2) To precisely determine the required size, calculate the dimensions of FFB and RAB.

PSK PORTAL 100 KF PLUS Vertical section, top



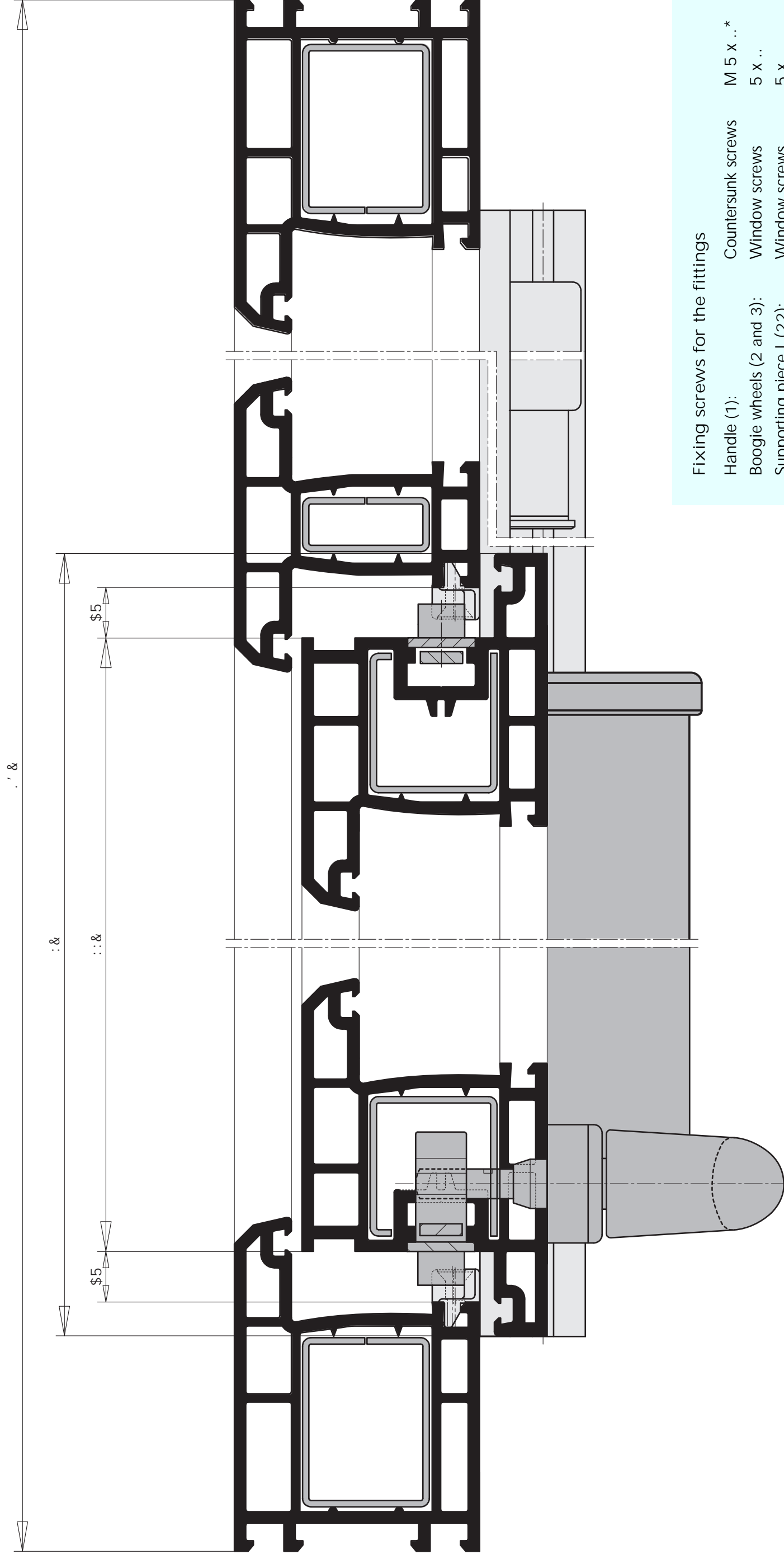


Illustration shows DIN left.

DIN right is a mirror image of this illustration.

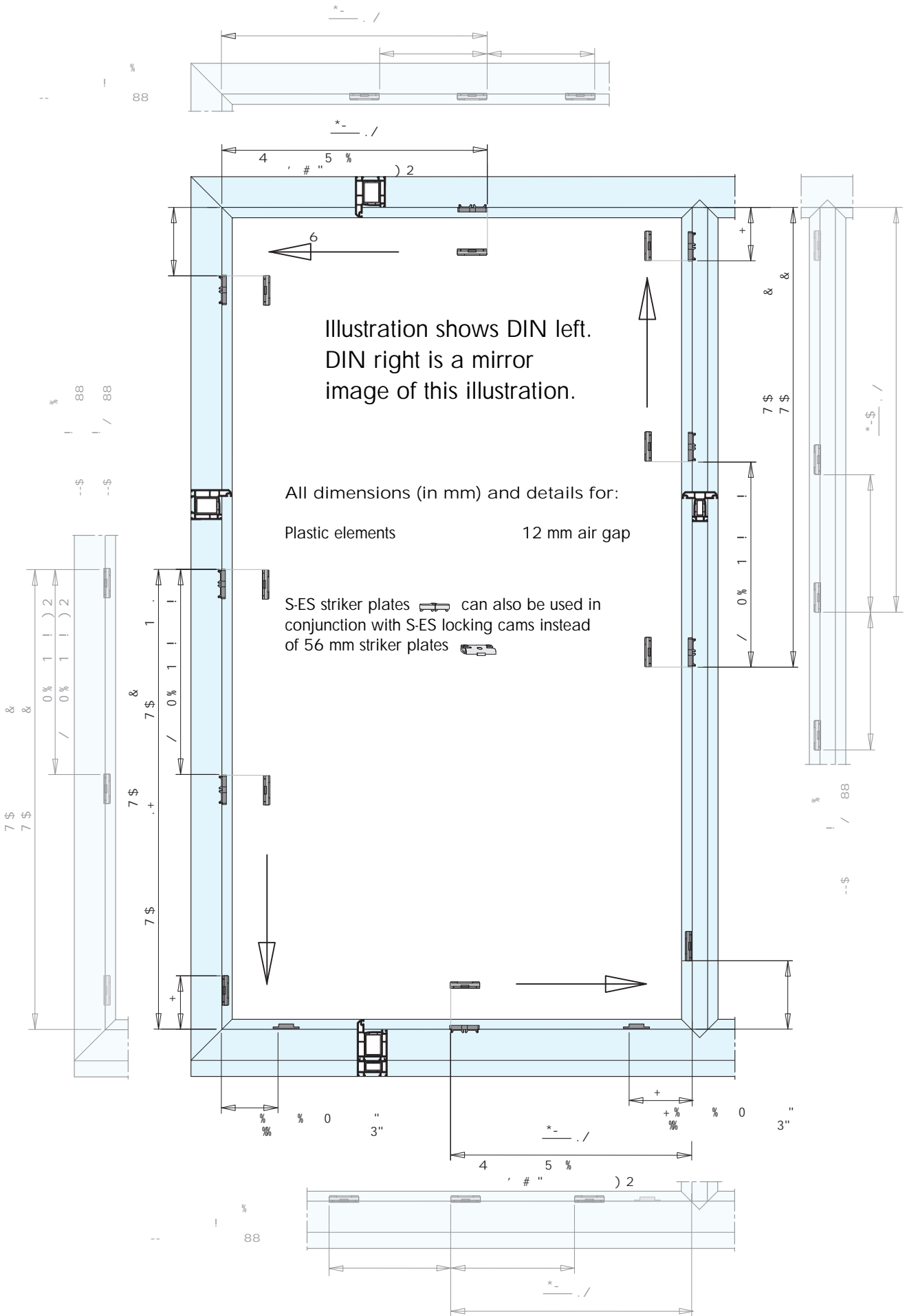
Fixing screws for the fittings

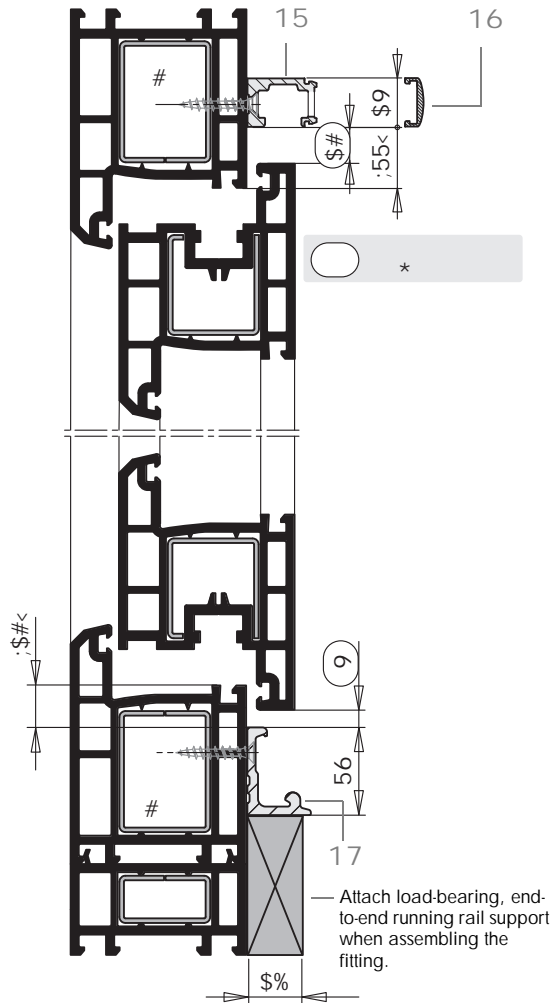
Handle (1):	Countersunk screws	M 5 x ..*
Bogie wheels (2 and 3):	Window screws	5 x ..
Supporting piece L (22):	Window screws	5 x ..
Remaining fittings:	Window screws	4 x ..

* The lengths of the fixing screws must be adjusted to the profile system.

Important: The screws of the load-bearing components such as the bogie wheels (2 and 3), guiding rail (15) and running rail (17) must be secured in the reinforcement profile.

Window screws, steel, clear zinc-coated (not included in scope of delivery)





Mounting the running rail and guiding rail

- A Cut the guiding rail (15) and running rail (17) to length.
- B Position and secure both parts as per the displayed dimensions.
- C Push both sliders (4) into the guiding rail (15).
- D Cut cover rail F (16) to length and clip on.
- E Put on lateral cover caps F (9 and 10).
- F Place load-bearing, end-to-end support underneath the running rail (17).
(See illustration opposite or illustration on page 16.)

G Position locking part (21) and tighten with SW 4 hexagon socket head wrench (torque: 4 – 4.5 Nm).

Rebate width	Dimension R ¹⁾
18	59
19	58
20	57
21	56
22	55

1) Important: If the dimension 17 mm on page 19 increases or decreases, dimension R increases or decreases accordingly.

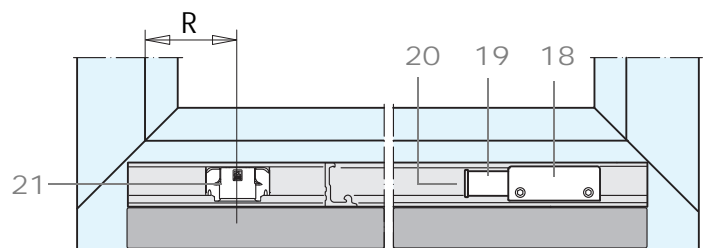
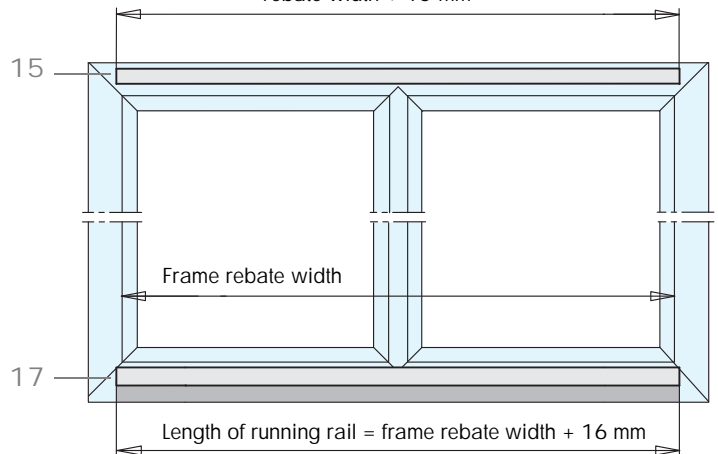
H Push stop (19) and sealing cap (20) into stop bracket (18) according to sliding direction DIN left or DIN right.

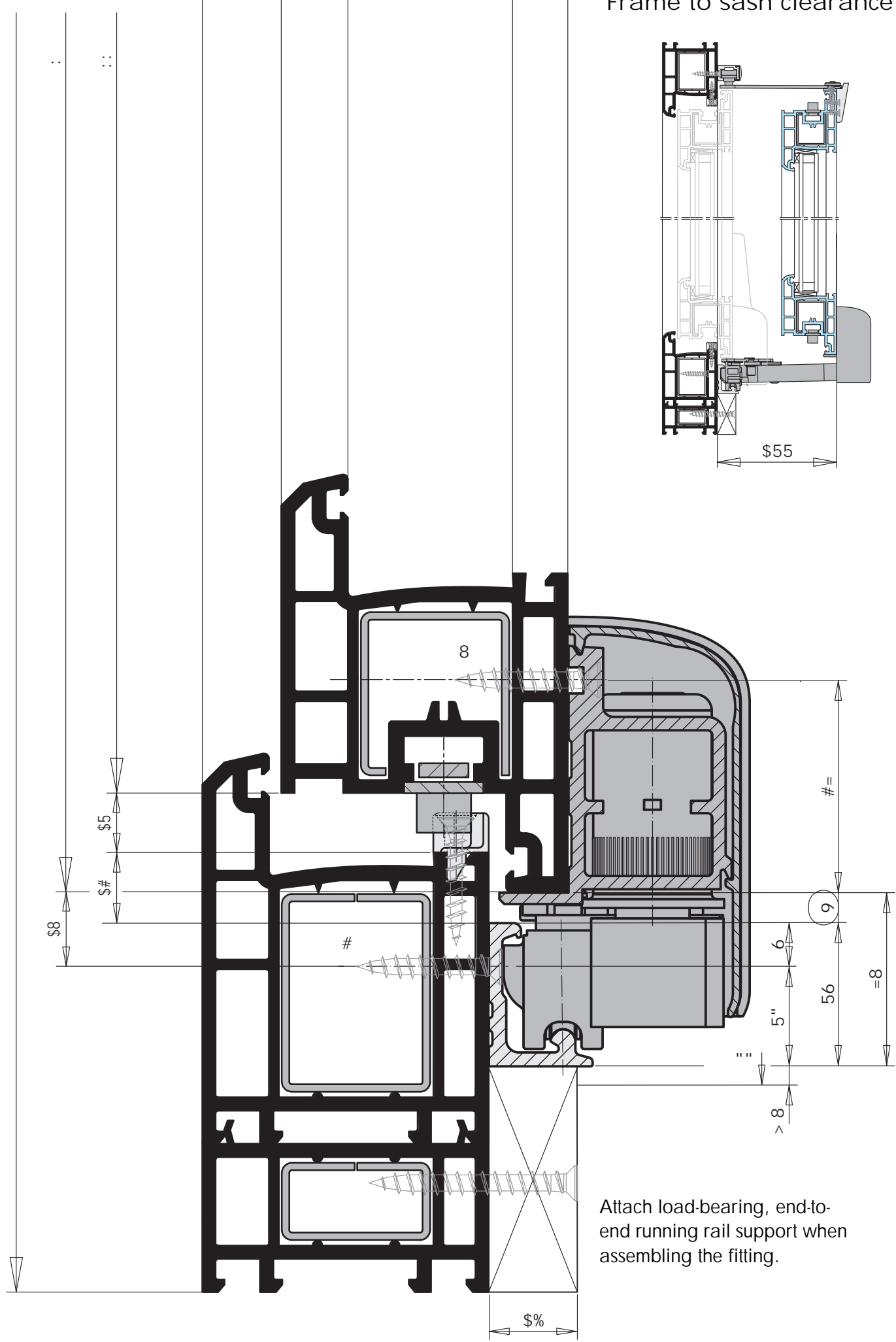
I Insert stop bracket (18) into running rail (17) and tighten slightly.

Note: Do not screw in the stop bracket (18) tightly until after the sliding sash has been mounted (see page 20).

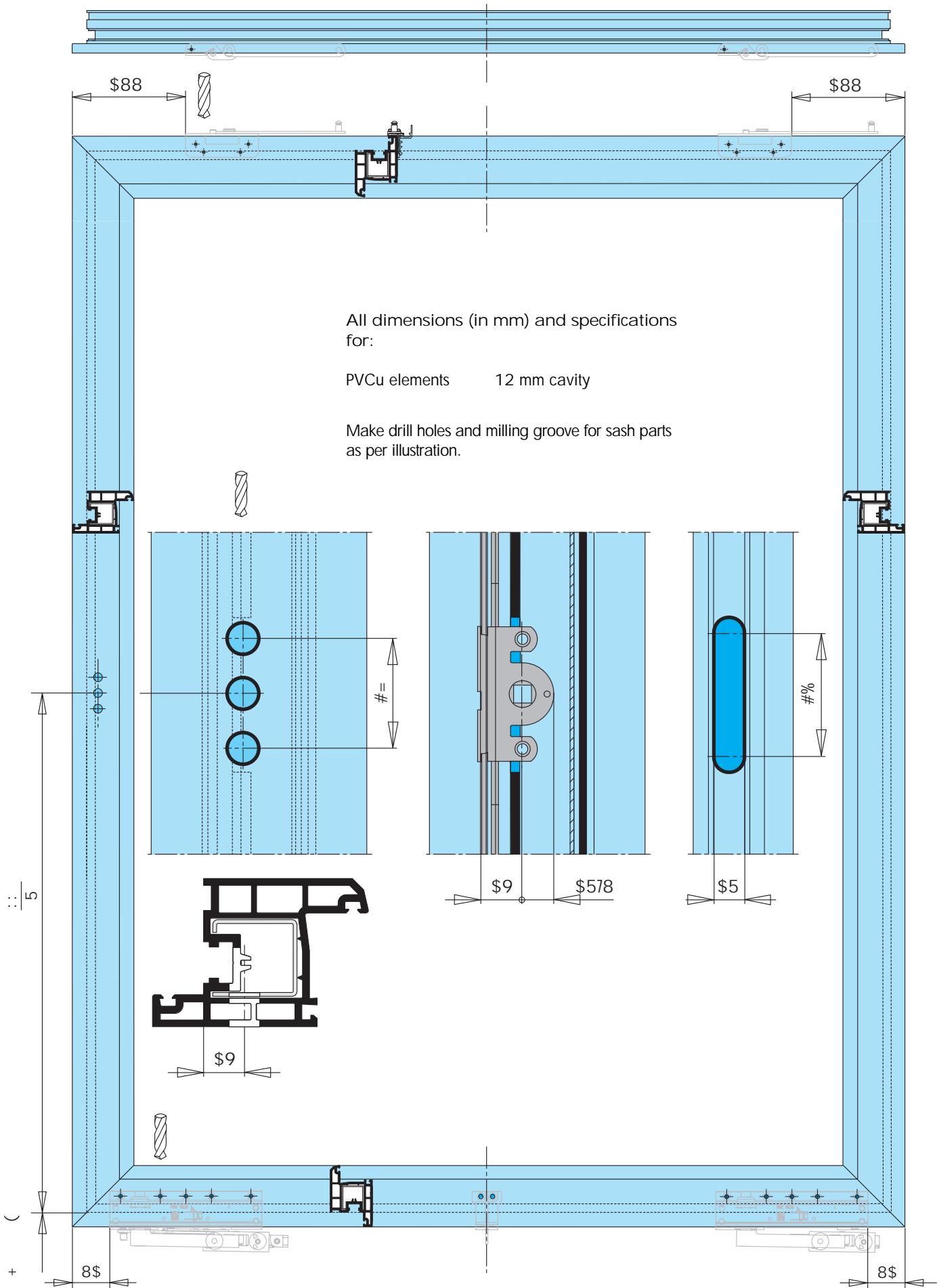
8 mm sash overlap on frame equates to being "flush with sash outer edge".

Length of guiding rail and cover rail = frame rebate width + 10 mm

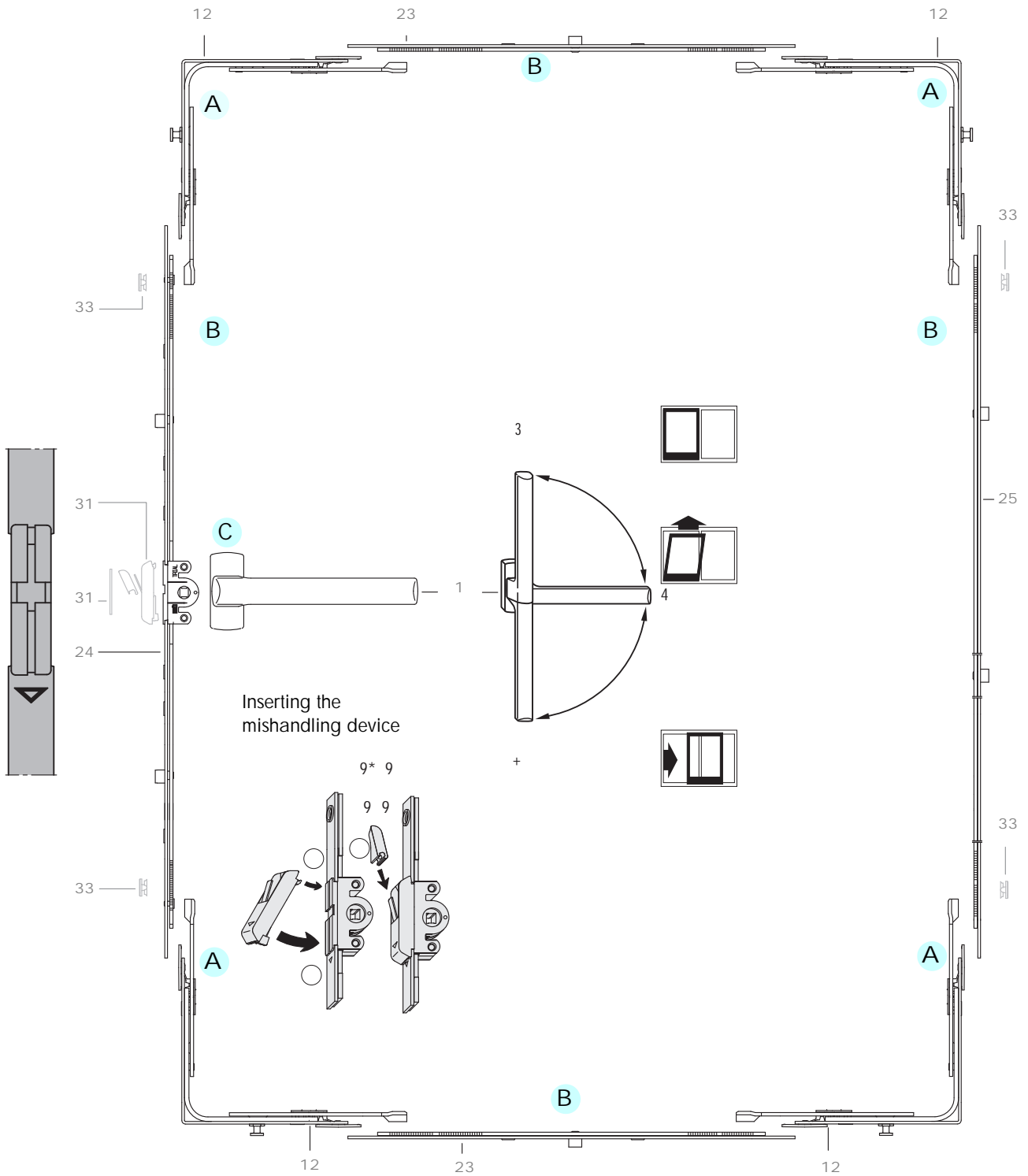




PSK PORTAL 100 KF PLUS Preparing the sash frame



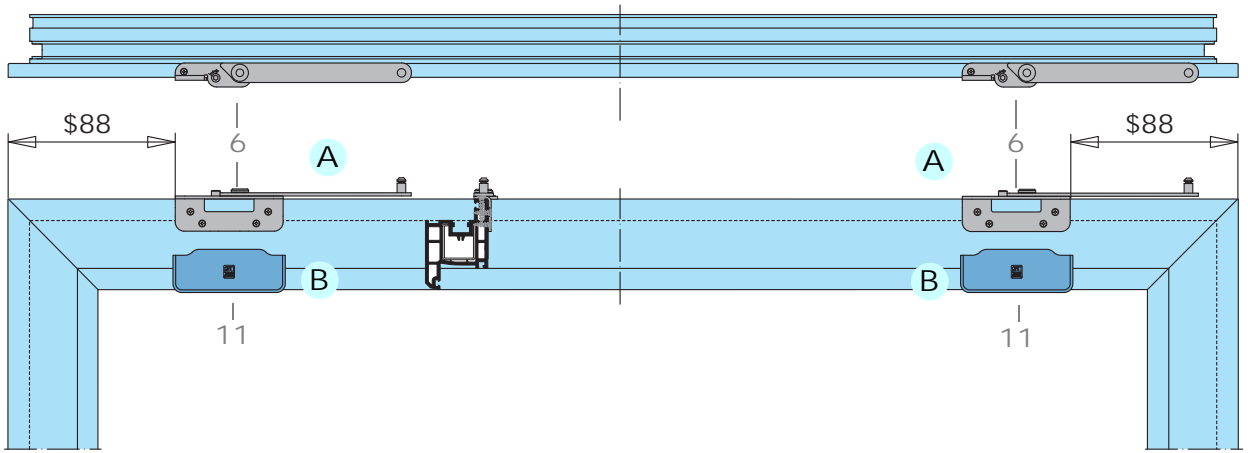
PSK PORTAL 100 KF PLUS Sash frame: Mounting ZV (FAVORIT components)



Mounting the central locking part on the sash frame

- A Insert corner drives (12) into the fitting groove (ensuring you adhere to the correct positional arrangement) and tighten.
- B Cut the gear (24) and the linkages (23 and 25) to length, insert into the fitting groove and tighten.
 Note: Always insert the linkages (23 and 25) (lettering FFH, etc. overhead) in the opposite direction to the direction of closing. Also insert the gear (24) in the opposite direction to the direction of closing – with sz. 1a, 2 and 3, locking cams below the handle position.
- C Attach handle (1) horizontally and release the fixing of the components by pressing down the handle.
 Note: See page 13 for fixing screws.

PSK PORTAL 100 KF PLUS Sash frame: Mounting the PSK components



Mounting the tilt stay

- A Screw the tilt stay (6) to the sash 155 mm from the sash edge.
- B Clip on cover caps K (11).

Mounting the bogie wheels

- C Tightly screw in bogie wheels V (2) at the front and bogie wheels H (3) at the rear.
- D Centre supporting piece L (22) for cover rail L (13) and screw on.
- E Attach connecting rod (14) to bogie wheels V (2), mark it at the marking of bogie wheels H (3) and cut to length.
Insert connecting rod (14) into bogie wheels H (3) and clamp with hexagon socket screw (torque of 10 - 11 Nm). For this use hexagon socket head wrench SW 4.
Insert connecting rod (14) into bogie wheels V (2).
Fix (secure) bogie wheels H (3) in the closing position.
Observe parallel position of bogie wheels V and H (2 and 3).
Also clamp connecting rod (14) in bogie wheels V (2) with a hexagon socket screw (torque of 10 - 11 Nm).
- F After the sash frame has been mounted into the window frame (see page 20), snap on cover rail L (13) and slide on cover caps L (7 and 8).

Note: See page 13 for fixing screws.

