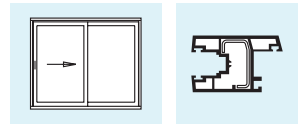


cs PORTAL KF

Sliding Door fittings
for PVCu Doors with 16 mm Eurogroove



Profilextruder

Aluplast

Brüggmann

Deceuninck

Dimat

Edil-Plastix

Gealan

HT-Tropplast

KBE

Kömmerling

Profex

Rehau

Salamander

Thyssen

Tolema

Veka AG

Wymar

... with the decisive advantages:

- optional 1 to 4 locking points
- anti-lift points
- rubber bump buttons as standard on drive gear
- pressed steel strikers mean no machining of outer frame
- comfortably moulded handle

Size Range

Sash rebate height	(mm)	440 to 2300
Sash rebate width	(mm)	dependent upon profile system specifications
Sash weight	(kg)	80/150
Backset (Standard-Drive Gear)	(mm)	9
Backset (Drive Gear PZ-17)	(mm)	17

Under no circumstances should the size ranges specified above be exceeded.

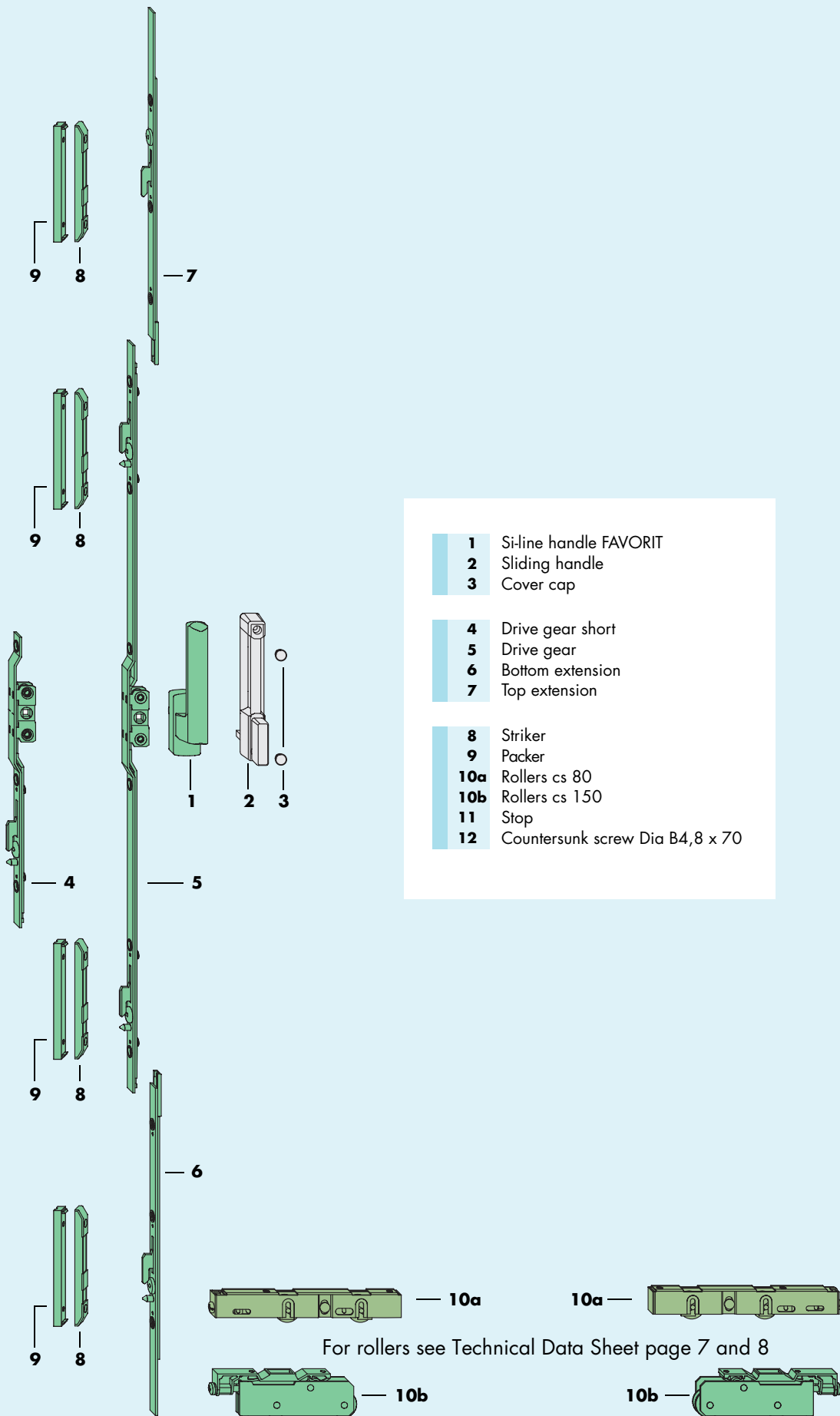
Specifications from the profile systems companies for SIEGENIA-AUBI CS-PORTAL KF fittings must be consulted in particular for possible restrictions on sash sizes and weights.

Contents

Size Range	Page 1	Fitting layout	Page 9
Fitting layoutFitting layoutFitting layout	Page 2	Parts List.....	Page 10
Parts List	Page 3	Sash and frame preparation.....	Page 11
Sash and frame preparation	Page 4	Important notes and abbreviations	Page 12
Profile recommendations(I)	Page 5	Profile recommendations (I)	Page 13
Profile recommendations (II)	Page 6	Profile recommendations (II).....	Page 14
technical Datasheet Roller cs 80.....	Page 7	Strikers and pakers	Page 15
technical Datasheet Roller cs 150.....	Page 8	blank page	Page 16

Assembly instruction
 CSgb4002

cs PORTAL KF with Standard drive gear *Fitting layout*



- 1** Si-line handle FAVORIT
- 2** Sliding handle
- 3** Cover cap
- 4** Drive gear short
- 5** Drive gear
- 6** Bottom extension
- 7** Top extension
- 8** Striker
- 9** Packer
- 10a** Rollers cs 80
- 10b** Rollers cs 150
- 11** Stop
- 12** Countersunk screw Dia B4,8 x 70

For rollers see Technical Data Sheet page 7 and 8

cs PORTAL KF with Standard drive gear Parts List

	Pos.	Qty.	Materialshorttext	Materialnumber			
				white	brown		
always required	1		Si-line handle FAVORIT	<i>s. handle options below</i>			
		1	Sliding handle Carton <i>consists of:</i>	828274	828281		
	2	1	Sliding handle				
	3	2	Cover cap				
dep. on height	4	1	Drive gear short	<i>Length (in mm)</i> 300	<i>FFH (in mm)</i> 440 bis 1010	702611	
	5		Drive gear	Gr. 100 1010	1010 bis 1810	702628	
	6	0...1	Bottom extension	500 ¹⁾	1811 bis 2300	718780	
	7	0...1	Top extension	500 ¹⁾	1811 bis 2300	718797	
profile dependent	8	1...4	Striker	Exec.		<i>see page 4</i>	
	9	0...4	Packer	Exec.		<i>see page 4</i>	
	10a	0...2	Rollers cs 80		Sash weight max. 80 kg	<i>see Technical Data Sheet page 7 and 8</i>	
	10b		Rollers cs 150	Exec.	Sash weight max. 150 kg		
		0...1	Bag for stop parts			821237	821244
	11	1	Stop				
12	1	Countersunk screw Dia B4,8 x 70					

1) croppable by 100 mm

Note: This list of fittings refers only to schemes which have only one sliding door

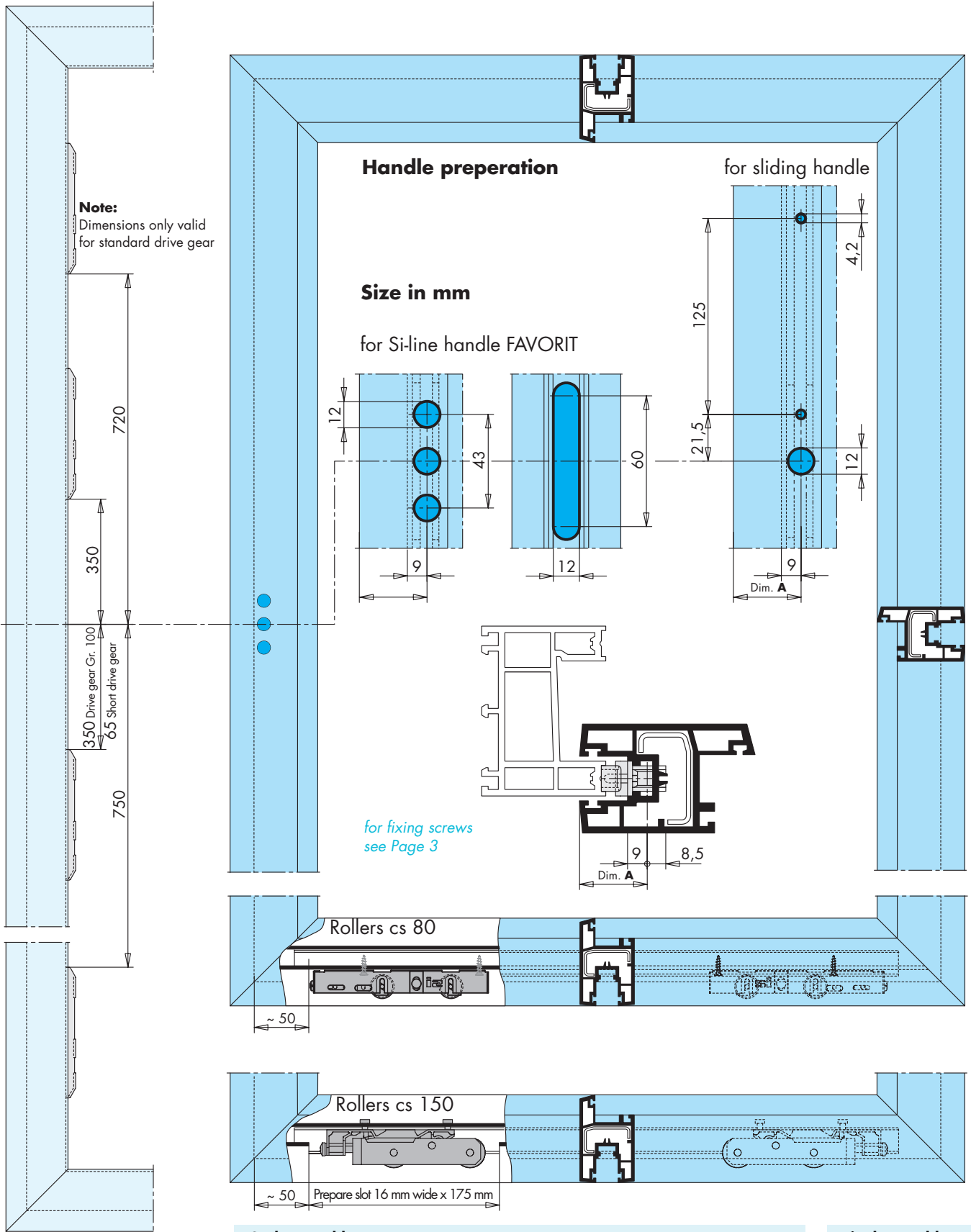
Attachment of Hardware

- Si-line handle FAVORIT (1): Csk. screw M5 x ..
- Sliding handle (2): Window screw 5 x ..
- Rollers cs 150 (10b): Csk. screw M5 x ..
- Other fittings: Window screw 4 x ..

Countersunk screws M5 x .. conform to DIN 965 - 4.8 and screws for pvcu windows are Steel transparent zinc coated (not in product range)
Screw length depends on profile system.

Handle Options

Materialshorttext	Colour		Material-number	Colour		Material-number	Colour		Material-number
	Handle	Rose		Handle	Rose		Handle	Rose	
Si-line Handle FAVORIT BASIS	silver	silver	864715	RAL 9003 white	RAL 9003 white	844052	RAL 8019 brown	RAL 8019 brown	844069
	new silver	new silver	869024						
Si-line Handle FAVORIT LUXURY	light matt titanium	light matt titanium	848647	matt Gold	matt Gold	848654			



Frame assembly

Place strikers (8) in the correct position and screw on.

Sash assembly

- A** Pre-drill for the handle (1) or sliding handle (2).
- B** For FFH from 440 to 1010 mm, use the short drive gear (4).
For FFH from 1011 to 1810 use the drive gear Gr. 100 (5).
For FFH from 1811 to 2300 mm, use bottom (6) and top extensions (7) with drive gear Gr.100 (5).
Note: For FFH 1811 to 2011 cut extensions (6 and 7) down.
- C** Put the gear (4 or 5) into the open position and screw on. With the handle (1) or (2) in the horizontal position screw on to the drive gear, max. torque 2,5 Nm.

Final assembly

- A** Place the sliding sash into the outer frame.
- B** Check for correct operation.

CS-PORTAL KF with Standard drive gear Profile recommendations(I)

CS-PORTAL KF with Standard drive gear Profile recommendations (II)

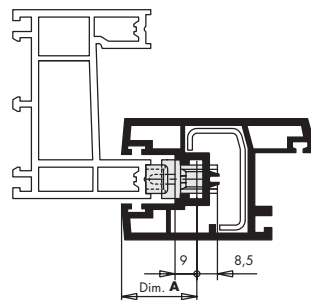
Company	System	Outer-frame	Sash	Striker		Packer		Dim. A (in mm)	
				Exec.	Materialnumber	Exec.	Materialnumber		
Aluplast		100040	100039		702987		cover strip on site 690984	29	
		100080	100082	A0010	702994 ¹⁾		-	34	
available at the beginning of 2006	SF 60	100070	100072	A0010	702994 ¹⁾		-	32	
Brüggmann	S 570	HF 575	HF 570		702987		-	29	
Deceuninck	Monorail	P3400	P3410		702987	A0085	PRUD0050-100010	39	
Dimex	Perfekt 60	610800	610700	A0010	702994 ²⁾		-	29	
		610900	611000	A0010	702994 ²⁾		-	29	
EdilPlastix		P1801	P1802		702987		-	29	
		P1810							
Gealan	SF	2029	3085	A0010	702994		-	32	
		3029	3083	A0010	702994		-	32	
		3030	3031	A0010	702994		-	32	
HT-Tropplast	TROCAL	915100	925500		702987	A0105	703083	31	
			925600					31	
KBE		700	710	A0010	702994 ²⁾		-	31	
Kömmerling	SF 2 - ES	1385	1386		702987	A0157	703335	36	
			1391		702987	A0157	703335	36	
	SF 3	1397	1396	A0010	702994		-	30	
LB.Profile		SU 2-3	SH 2-3	A0010	702994		-	30	
Plus Plan		HS 58 MIC	IL 38 MIC		702987		-	30	
Profex		P 145	P 146		702987		-	34	
		2401	2403		702987		-	30	
			2404					30	
Rehau	S 717	624802	624812		702987	A0002	703328	30	
			557090					30	
			557091					30	
			557100					30	
			557141					30	
			557142					30	
	S 781	614823	614833		702987		-	30	
	Salamander	Design iD Jetline	600 025	601 025	A0116	703007		-	31
			600 030	601 030					31
			610040	611020		702987	A0008	703076	39
Thyssen	Slidingwindow	SF 1	SR 1		702987		-	28,5	
	Patio Door	ST1	ST 5	A0116	703007 ³⁾		-	34	
Tolema		700	710	A0010	702994 ²⁾		-	31	
Veka AG	Sliding - window door	105.101	105.102	A0116	703007		-	31	
		105.069	105.095					31	
	Topline	105.204	105.203	A0116	703007 ³⁾		-	32	
Wymar 2000		2400	2402		702987		-	30	
		2401	2403		702987		-	30	
			2404					30	

Company	System	Outer-frame	Sash	Rollers 150 kg			Rollers 80 kg			
				Exec.	Materialnumber	(± 3,5 adjustable) Height standard	Height required	Materialnumber	(± 2,5 adjustable) Height standard	Height required
Aluplast		100040	100039	A0023	828311	34	35	StAU bogie wheels not available		-
		100080	100082	A0018	828304	37	38	PLWD0010-000020	21	22,5
available at the beginning of 2006	SF 60	100070	100072	A0017	824542	30	28	StAU bogie wheels not available		17
Brüggmann	S 570	HF 575	HF 570		StAU bogie wheels not available			StAU bogie wheels not available		-
Deceuninck	Monorail	P3400	P3410	A0008	828298	44,5	47	PLWD0010-000020	21	20
Dimex	Perfekt 60	610800	610700	A0017	824542	30	28	PLWD0010-000020	21	20,8
		610900	611000	A0017	824542	30	28	PLWD0010-000020	21	20,8
EdilPlastix		P1801	P1802	A0018	828304	37	40	StAU bogie wheels not available		16
		P1810								
Gealan	SF	2029	3085	A0017	824542	30	28,5	PLWD0040-000020	24,5	23
		3029	3083	A0008	828298	44,5	41	PLWD0040-000020	24,5	22,5
		3030	3031	A0018	828304	37	37,5	PLWD0010-000020	21	18,5
HT-Tropplast	TROCAL	915100	925500	A0008	828298	44,5	42,5	PLWD0010-000020	21	18,3
			925600	A0023	828311	34	32	PLWD0010-000020	21	18,3
KBE		700	710		StAU bogie wheels not available			StAU bogie wheels not available		17
Kömmerling	SF 2 - ES	1385	1386	A0023	828311	34	32,5	PLWD0010-000020	21	21,5
			1391	A0195	PLWD0030-100010	49	50	PLWD0010-000020	21	21,5
	SF 3	1397	1396	A0017	824542	30	28	StAU bogie wheels not available		17
LB.Profile		SU 2-3	SH 2-3	A0008	828298	44,5	46	PLWD0010-000020	21	21
Plus Plan		HS 58 MIC	IL 38 MIC	A0017	824542	30	28	StAU bogie wheels not available		16,5
Profex		P 145	P 146	A0018	828304	37	38	StAU bogie wheels not available		-
		2401	2403	A0017	824542	30	28	StAU bogie wheels not available		-
			2404	A0008	828298	44,5	42,5	StAU bogie wheels not available		-
Rehau	S 717	624802	624812	A0018	828304	37	39	StAU bogie wheels not available		15
			557090	A0017	824542	30	27,3	StAU bogie wheels not available		16,5
			557091	A0017	824542	30	27,3	StAU bogie wheels not available		14,5
			557100	A0018	828304	37	40,4	StAU bogie wheels not available		16
			557141	A0018	828304	37	40,4	StAU bogie wheels not available		14,5
			557142	A0018	828304	37	40,4	StAU bogie wheels not available		14,5
	S 781	614823	614833	A0018	828304	37	39,2	StAU bogie wheels not available		14,3
	Salamander	Design iD Jetline	600 025	601 025	A0017	824542	30	31,5	PLWD0010-000020	21
600 030			601 030	A0008	828298	44,5	43,5	PLWD0010-000020	21	21
610040			611020	A0018	828304	37	37	PLWD0040-000020	24,5	26
Thyssen	Slidingwindow	SF 1	SR 1		StAU bogie wheels not available			PLWD0010-000020	21	20
	Patio Door	ST1	ST 5	A0008	828298	44,5	45,5	PLWD0010-000020	21	22
Tolema		700	710		StAU bogie wheels not available			StAU bogie wheels not available		17
Veka AG	Sliding - window door	105.101	105.102	A0017	824542	30	31,5	PLWD0010-000020	21	21
		105.069	105.095	A0008	828298	44,5	43,5	PLWD0010-000020	21	21
	Topline	105.204	105.203		StAU bogie wheels not available			StAU bogie wheels not available		30,5
Wymar 2000		2400	2402	A0008	828298	44,5	43,5	PLWD0010-000020	21	20
		2401	2403	A0017	824542	30	28	StAU bogie wheels not available		-
			2404	A0008	828298	44,5	42,5	PLWD0010-000020	21	20

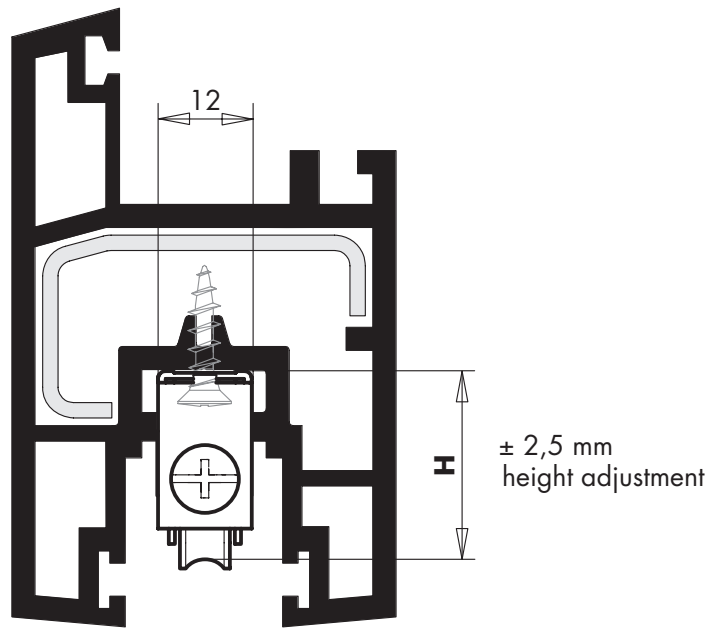
1) According to the section manufacturer the recess dimension is 15 mm. The striker plate quoted requires 12 mm. Allow for the difference of 3 mm when cutting the sash to size. **Outside sash width + 3 mm!**

2) According to the section manufacturer the recess dimension is 13 mm. The striker plate quoted requires 12 mm. Allow for the difference of 1 mm when cutting the sash to size. **Outside sash width + 1 mm!**

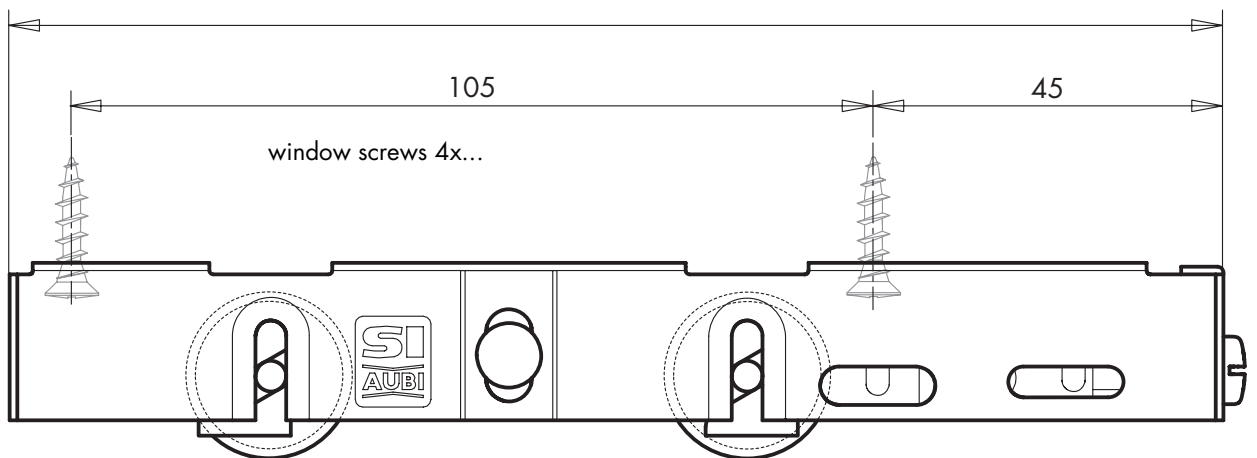
3) According to the section manufacturer the recess dimension is 16 mm. The striker plate quoted requires 12 mm. Allow for the difference of 4 mm when cutting the sash to size. **Outside sash width + 4 mm!**



cs PORTAL KF technical Datasheet Roller cs 80

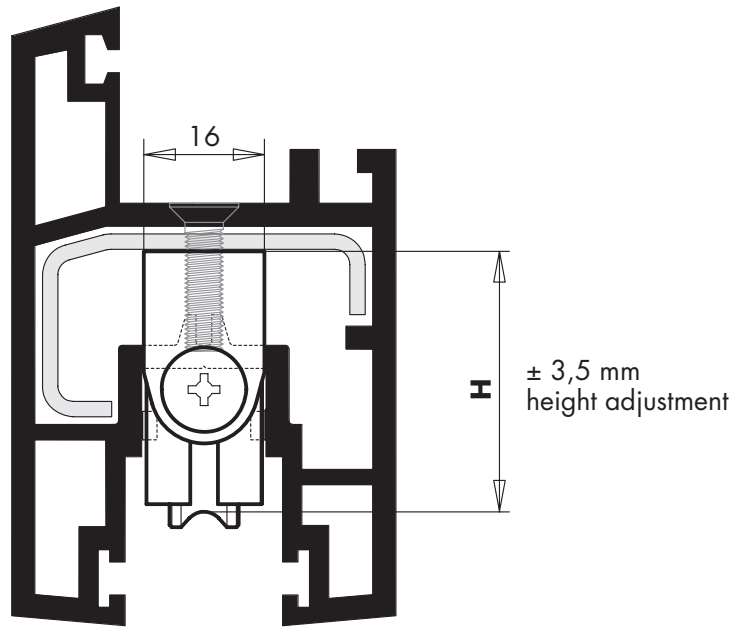


Dimensions in mm

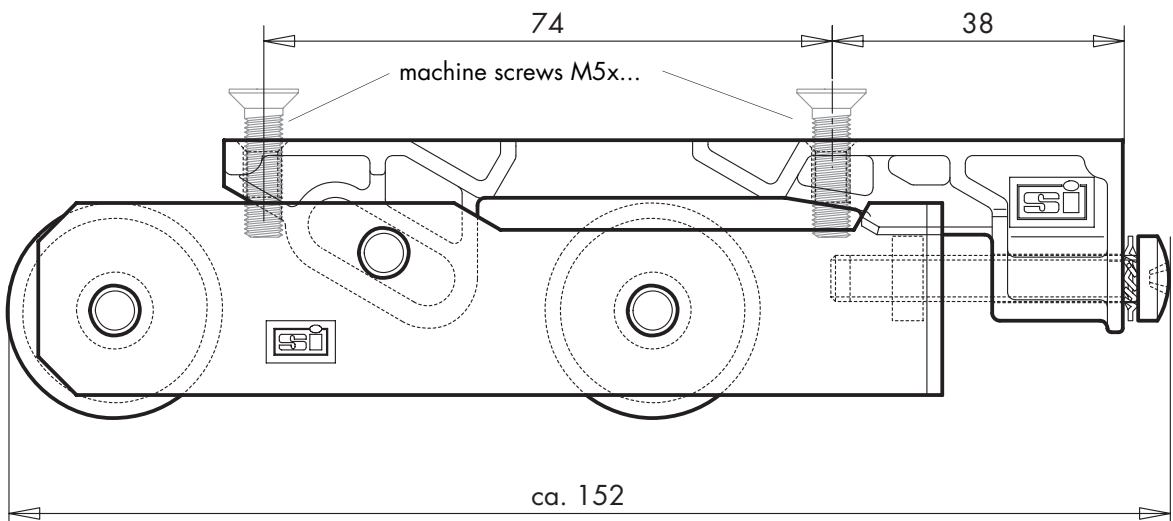


- to suit tracks of radius R 2 – R 2,5 mm
- load capacity max. 80 kg/pair
- ball bearing raced wheels

Materialshorttext	Dim. H in mm	VPE	VKE Qty.	Materialnumber	
Roller cs 80	stainless steel	24,5	KRT	10	PLWD0040-000020
	stainless steel	21	KRT	10	PLWD0010-000020



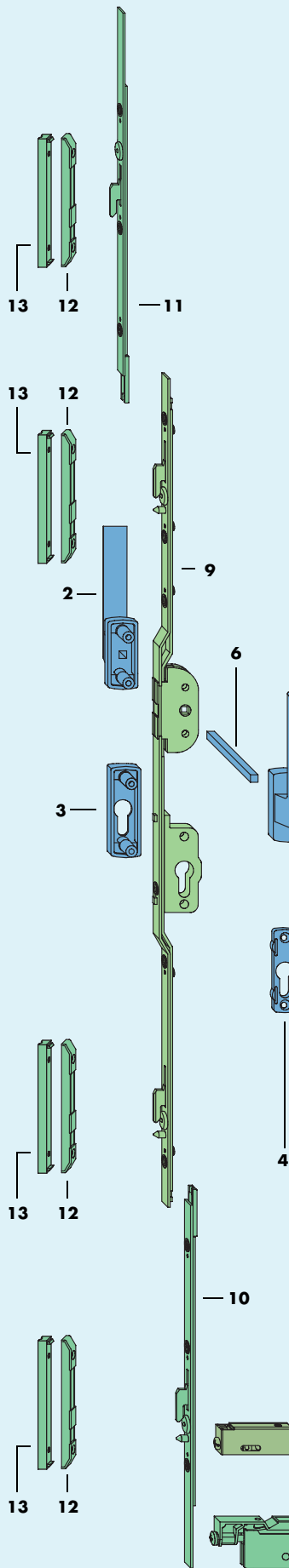
Dimensions in mm



- to suit tracks of radius R 2 – R 2,5 mm
- load capacity max. 150 kg/pair
- ball bearing raced wheels

Materialshorttext		Maß H in mm	VPE	VKE Qty.	Materialnumber
Roller cs 150	yellow chromated	A0017	ET	1	824542
			KRT	20	217764
		A0023	ET	1	828311
			KRT	20	215425
		A0018	ET	1	828304
			KRT	20	217771
		A0008	ET	1	828298
			KRT	20	217757
		A0195	ET	1	PLWD0030-100010
			KRT	20	PLWD0030-100030

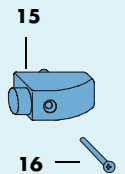
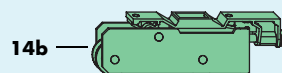
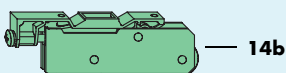
cs PORTAL KF with Drive gear PZ-17 Fitting layout



- 1** Si-line handle FAVORIT without square drive
 - 2** Si-line handle FAVORIT external
 - 3** Rose Si-line PZ external
 - 4** Rose Si-line PZ internal
 - 5** Cover cap Si-line PZ internal
 - 6** Square spindle 7 mm
 - 7** Countersunk screw M5 x .. (for handle)
 - 8** Countersunk screw M5 x .. (for rose)
-
- 9** Drive gear PZ-17
 - 10** Bottom extension
 - 11** Top extension
-
- 12** Striker
 - 13** Packer
 - 14a** Rollers cs 80
 - 14b** Rollers cs 150
 - 15** Stop
 - 16** Countersunk screw Dia B4,8 x 70



For rollers see Technical Data Sheet page 7 and 8



cs PORTAL KF with Drive gear PZ-17 Parts List

Pos.	Qty.	Materialshorttext	Materialnumber				
			white	brown			
always required	1	Hebel Si-line FAVORIT-TL/PZ <i>bestehend aus:</i>	internal and external	flat or raised	s. handle options below		
	1	Si-line handle FAVORIT without square drive					
	2	Si-line handle FAVORIT external	flat or raised				
	3	Rose Si-line PZ external					
	4	Bag Cover cap Si-line PZ					
	5	Rose Si-line PZ internal					
	5	Cover cap Si-line PZ internal					
	1	Accessories FAVORIT TL/PZ <i>consisting of:</i>	internal and external lockable Profile thickness 55 - 64 mm Profile thickness 65 - 74 mm Profile thickness 75 - 84 mm			ZMZP0030-100010 ZMZP0020-100010 ZMZP0010-100010	
6	Square spindle 7 mm	115 mm long 125 mm long 135 mm long					
7	Countersunk screw M5 x .. (for handle)	65 mm long 75 mm long 85 mm long					
8	Countersunk screw M5 x .. (for rose)	60 mm long 70 mm long 80 mm long					
dep. on height	9	Drive gear PZ-17	Gr. 100	Length (in mm) 1000	FFH (in mm) 1000 bis 1800	702802	
	10	0...1	Bottom extension	500 ¹⁾	1801 bis 2300	718780	
	11	0...1	Top extension	500 ¹⁾	1801 bis 2300	718797	
profile dependent	12	1...4	Striker	Exec.		see Page 8	
	13	0...4	Packer	Exec.		see Page 8	
	14a	0...2	Rollers cs 80		Sash weight max. 80 kg	see Technical Data Sheet Page 7 and 8	
	14b	0...2	Rollers cs 150	Exec.	Sash weight max. 150 kg		
		0...1	Bag for stop parts			821237	821244
	15	1	Stop				
16	1	Countersunk screw Dia B4,8 x 70					

1) croppable by 100 mm

Note: This list of fittings refers only to schemes which have only one sliding door

Attachment of Hardware

- Handle (**1** and **2**) : Csk. screw M5 x .. (included)
- Int/Ext PZ rose (**4** and **3**): Csk. screw M5 x .. (included)
- Rollers cs 150 (**14b**): Csk. screw M5 x .. accord. DIN 965 - 4.8 (not included)
- Other fittings: Window screw 4 x ..

Countersunk screws M5 x .. conform to DIN 965 - 4.8 and screws for pvcu windows are Steel transparent zinc coated (not in product range)

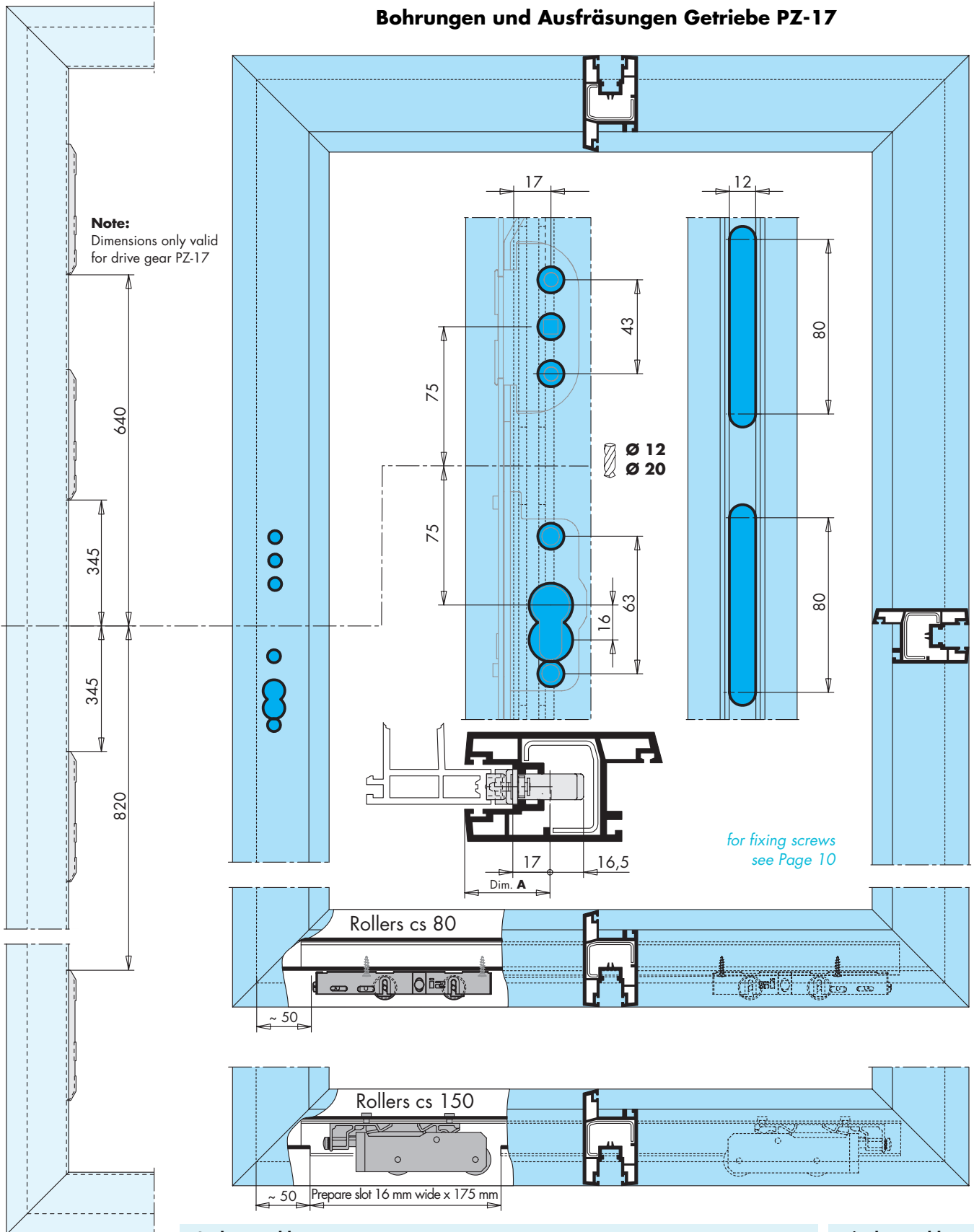
Screw length depends on profile system.

Handle Option

Pos.	Materialshorttext	Colour		Materialnumber
		Handle	Rose	
1-5	Handle Si-line FAVORIT-TL/PZ internal and external exterior flat	silver	silver	870433
		new silver	new silver	870464
		RAL 9003 white	RAL 9003 white	870488
		RAL 8019 brown	RAL 8019 brown	870495
		other colours on request		
	Handle Si-line FAVORIT-TL/PZ internal and external exterior raised	silver	silver	871379
		new silver	new silver	871409
		RAL 9003 white	RAL 9003 white	871423
		RAL 8019 brown	RAL 8019 brown	871430
		other colours on request		

cs PORTAL KF with Drive gear PZ-17 Sash and frame preparation

Bohrungen und Ausfräsungen Getriebe PZ-17



Frame assembly

Place strikers (12) in the correct position and screw on.

Sash assembly

- A** Pre-drill for the drive gear PZ-17 (9). See diagram.
- B** For FFH from 1000 to 1800 mm use PZ-17 drive (9).
BFor FFH from 1801 to 2300 mm, use bottom (10) and top (11) extensions with drive gear PZ-17 (9).
Note : For FFH 1800 to 2000 mm cut extensions
- C** Insert spindle (6) into PZ-17drive (9) and put the gear in the open position. Screw the int/ext handles (1 and 2) on in the horizontal position. Insert cylinder and fix. Screw on the int/ext PZ rose (3 and 4). Clip on the internal PZ cover plate (5).

Final assembly

- A** Place the sliding sash into the outer frame.
- B** Check for correct operation.

Important Notes

- Please observe our Product information, "Sliding fittings for windows and doors."
- The size range on page 1 is valid for SIEGENIA-AUBI fittings CS-PORTAL KF. The recommendations of the profile company must also be considered, especially with regard to limitations on sash size and weight.
- The steel hardware components described in these instructions are passivated colourless and sealed in accordance with DIN EN 12329. They must not be installed for use in aggressive corrosion promoting air conditions.
- Assemble the hardware components correctly as described in this instruction leaflet.
- Please follow the standard techniques for glazing and wedging of glass sealed units within the sash and frame.
- Do not use any acid bonding sealants, as these can lead to corrosion of the hardware components.
- Keep the running lip of the running rail and all rebates clear of deposits and dirt, - particularly residues of cement- or plaster. Avoid the direct effects of damp on the hardware and any contact with the hardware of cleaning fluids..

Liability exclusion

We accept no liability in respect of any changes or malfunctions caused by the hardware or the sliding doors fitted with them, as a result of incorrect and inappropriate specifications or other information provided by the customer, failure to follow these instructions, wilful damage or negligence or misuse or alteration or repair, or exertion of excessive force to the hardware by the user or the customer.

Abbreviations

The following abbreviations are used in this document:

cs	coulissant (sliding window)	KF	pvcu	PZ	profile cylinder
FFH	sash rebate height	TL	door length		

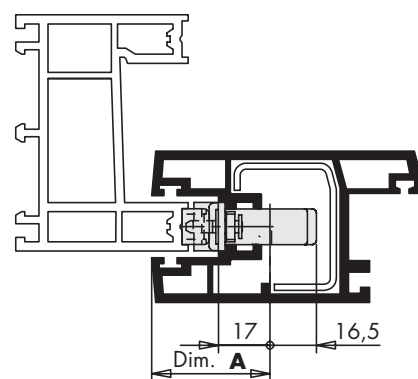
Company	System	Outer-frame	Sash	Striker		Packer		Dim. A (in mm)
				Exec.	Materialnumber	Exec.	Materialnumber	
Aluplast		100040	100039		702987		cover strip on site 690984	37
Deceuninck	Monorail	P3400	P3410	A0010	702994	A0085	PRUD0050-100010	45
EdilPlastix		P1801 P1810	P1802		702987		-	37
Dimex	Perfekt 70	610900	611000	A0010	702994 ¹⁾		-	37
Gealan		2029	3085 ²⁾	A0010	702994		-	40
	SF	3029	3083	A0010	702994		-	40
	ST	3030	3031	A0010	702994		-	40
HTTropplast	TROCAL	915100	925500		702987	A0105	703083	39
KBE		700	710	A0010	702994 ²⁾		-	39
Kömmerling	SF 2 - ES	1385	1391		702987	A0157	703335	44
LB.Profile		SU 23	SH 23	A0010	702994		-	38
Profex		P 145	P 146 ²⁾		702987		-	42
		2401	2404		702987		-	38
Rehau	S 717		624812					38
		624802	557100		702987	A0002	703328	38
			557141					38
			557142					38
	S 781	614823	614833		702987		-	38
Salamander		600 030	601 030	A0116	703007		-	31
	Design iD Jetline	610040	611020		702987	A0008	703076	47
Thyssen	Patio Door	ST 1	ST 5	A0116	703007 ²⁾		-	42
Tolema		700	710	A0010	702994 ²⁾		-	31
Veka AG	Sliding- door	105.069	105.095	A0116	703007		-	39
	Topline	105.204	105.203	A0116	703007		-	40
Wymar 2000		2400	2402		702987		-	38
		2401	2404		702987		-	38

Company	System	Outer-frame	Sash	Rollers 150 kg				Rollers 80 kg		
				Exec.	Materialnumber	(± 3,5 adjustable) Height standard	Height required	Materialnumber	(± 2,5 adjustable) Height standard	Height required
Aluplast		100040	100039	A0023	828311	34	35	SIAU bogie wheels not available		
Deceuninck	Monorail	P3400	P3410	A0008	828298	44,5	47	PLWD0010-000020	21	20
EdilPlastix		P1801 P1810	P1802	A0018	828304	37	40	SIAU bogie wheels not available		
Dimex	Perfekt 70	610900	611000	A0017	824542	30	29	PLWD0010-000020	21	20
Gealan		2029	3085	A0017	824542	30	28,5	PLWD0040-000020	24,5	23
	SF	3029	3083	A0008	828298	44,5	41	PLWD0040-000020	24,5	22,5
	ST	3030	3031	A0018	828304	37	37,5	PLWD0010-000020	21	18,5
HTTropplast	TROCAL	915100	925500	A0008	828298	44,5	42,5	PLWD0010-000020	21	18,5
KBE		700	710	SIAU bogie wheels not available			-	SIAU bogie wheels not available		
Kömmerling	SF 2 - ES	1385	1391	A0195	PLWD0030-100010	49	50	PLWD0010-000020	21	21,5
LB.Profile		SU 23	SH 23	A0008	828298	44,5	46	PLWD0010-000020	21	21
Profex		P 145	P 146	A0018	828304	37	38	SIAU bogie wheels not available		
		2401	2404	A0008	828298	44,5	42,5	SIAU bogie wheels not available		
Rehau	S 717		624812	A0018	828304	37	39	SIAU bogie wheels not available		
		624802	557100	A0018	828304	37	40,4	SIAU bogie wheels not available		
			557141	A0018	828304	37	40,4	SIAU bogie wheels not available		
			557142	A0018	828304	37	40,4	SIAU bogie wheels not available		
	S 781	614823	614833	A0018	828304	37	39,2	SIAU bogie wheels not available		
Salamander		600 030	601 030	A0008	828298	44,5	43,5	PLWD0010-000020	21	21
	Design iD Jetline	610040	611020	A0018	828304	37	37	PLWD0040-000020	24,5	26
Thyssen	Patio Door	ST 1	ST 5	A0008	828298	44,5	45,5	PLWD0010-000020	21	22
Tolema		700	710	SIAU bogie wheels not available			-	SIAU bogie wheels not available		
Veka AG	Schiebe- Tür	105.069	105.095	A0008	828298	44,5	43,5	PLWD0010-000020	21	21
	Topline	105.204	105.203	SIAU bogie wheels not available			-	PLWD0010-000020	21	21 ¹⁾
Wymar 2000		2400	2402	A0008	828298	44,5	43,5	PLWD0010-000020	21	20
		2401	2404	A0008	828298	44,5	42,5	PLWD0010-000020	21	20

1) According to the section manufacturer the recess dimension is 13 mm. The striker plate quoted requires 12 mm. Allow for the difference of 1 mm when cutting the sash to size. **Outside sash width + 1 mm!**

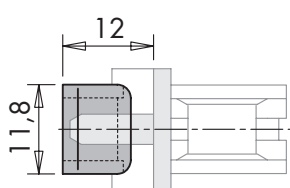
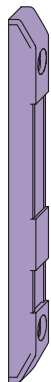
2) According to the section manufacturer the recess dimension is 16 mm. The striker plate quoted requires 12 mm. Allow for the difference of 4 mm when cutting the sash to size. **Outside sash width + 4 mm!**

1) with fitting groove rail 104.206

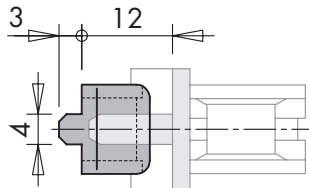


cs PORTAL KF Strikers and packers

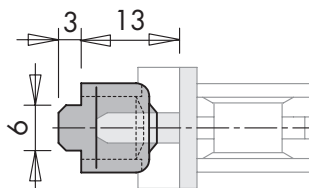
Standard striker



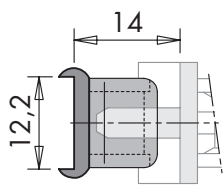
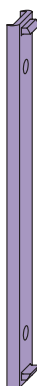
Striker A0010



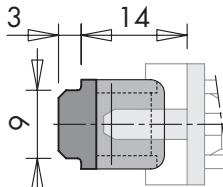
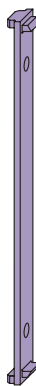
Striker A0116



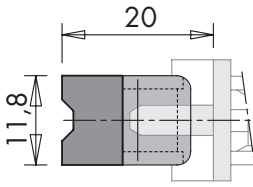
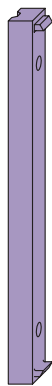
Packer A0002



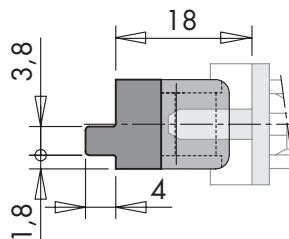
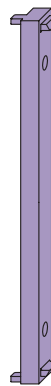
Packer A0105



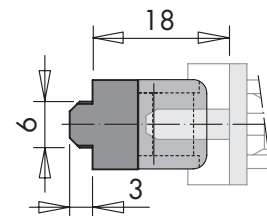
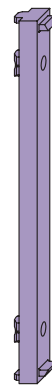
Packer A0008



Packer A0157



Packer A0085



Materialshorttext

VPE

VKE

Materialnummer

Materialshorttext	VPE	VKE	Materialnummer		
Striker	ET	1	702987		
	KRT	100	279458		
	A0010	ET	1	702994	
	KRT	100	279465		
Striker	A0116	ET	1	703007	
	KRT	100	279472		
	Packer	A0002	ET	1	703328
		KRT	100	279502	
A0008		ET	1	703076	
KRT		100	279489		
Packer	A0105	ET	1	703083	
	KRT	100	279496		
	A0157	ET	1	703335	
	KRT	100	279519		
Packer	A0085	ET	1	PRUD0050-100010	
	KRT	100	PRUD0050-100060		

