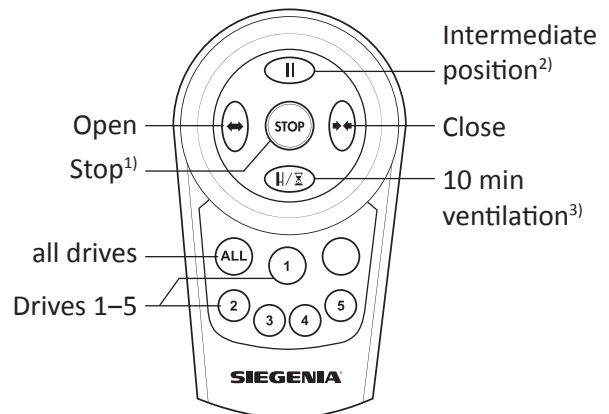


## 1 Operation with the infrared remote control

- During operation, always point the remote control towards the LED:
  - With window drives, the LED is located at the top edge of the frame.
  - With lift-slide drives, the LED is located at the bottom edge of the slide drive SA.
- Intense solar radiation and light incidence can reduce the range of the remote control.
- If, when a button is pressed, no function is carried out or the function indicator does not light up, the battery must be replaced. Used batteries must be disposed of in an environmentally safe manner. Insert 2 new batteries of one of the following types: Micro, LR03 or AAA
- To operate a drive, first activate the button of the programmed group (**ALL** or **1–5**).



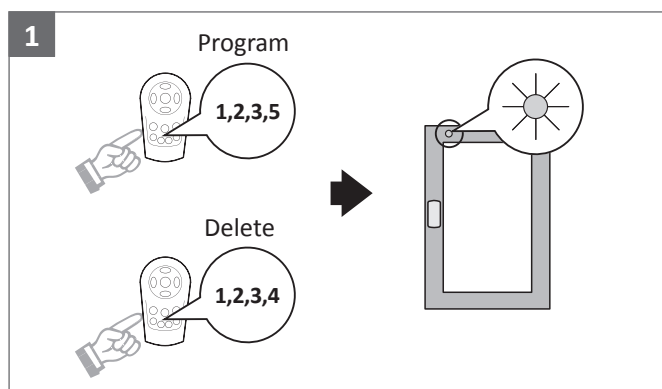
<sup>1)</sup> The button has no function with DRIVE axxent DK

<sup>2)</sup> The button has no function with window drives.

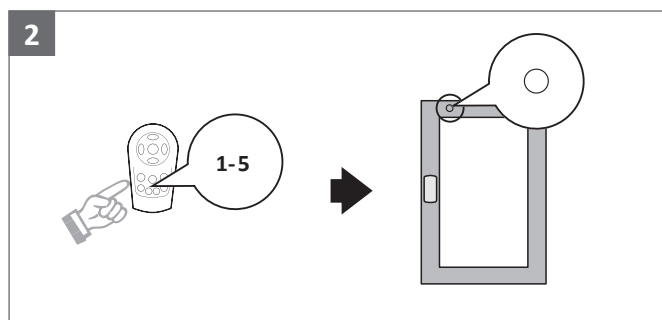
<sup>3)</sup> Note for HS drive: Pressing the button a second time cancels the timer. The lift-slide sash remains stationary. Pressing the button once more restarts the timer. The function controls the primary sash only.

## 2 Programming the infrared remote control

### 2.1 Window drives – DRIVE axxent DK

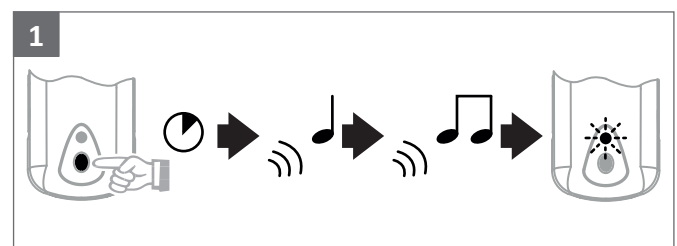


- Programming: Press buttons 1, 2, 3 and 5 within a period of 3 seconds
- Deleting: Press buttons 1, 2, 3 and 4 within a period of 3 seconds
  - LED lights up green



- Select window 1 to 5:
  - LED goes out after 10 seconds.
  - The remote control is programmed in or deleted

### 2.2 Window drives – MH10



- Press and hold button for 5 seconds:
  - 1 short acoustic signal is emitted
  - 2 short acoustic signals are emitted
- Release the button
  - LED flashes red

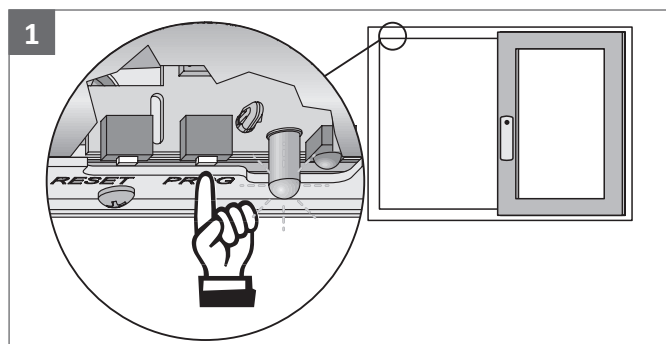


- Select window 1 to 5:
  - 1 short acoustic signal - The remote control is programmed in
  - 1 long acoustic signal - The remote control is deleted
  - LED goes out after 10 seconds.

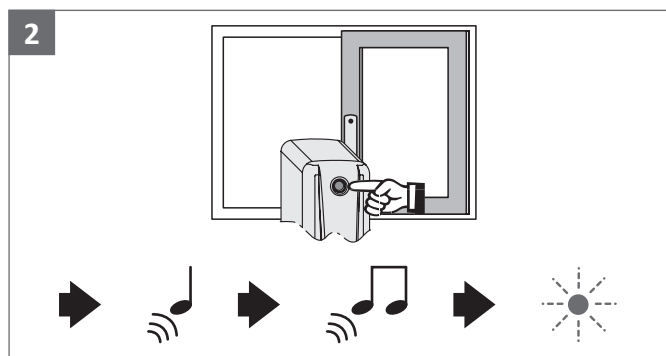
## 1.1 Lift-slide drives (HS drives)

### 1.1.1 Programming/deleting remote control

- Several lift-slide drives can be programmed in to one and the same group.
- Each lift-slide sash must be programmed in individually.
- Up to 8 remote controls can be programmed in on one lift-slide drive.



- Press "PROG" button:
  - LED flashes green



- Press and hold button for 5 seconds:
  - 1 short acoustic signal is emitted
  - 2 short acoustic signals are emitted
- Release the button
  - LED flashes red



- Press button for the required group briefly once:
  - 1 short acoustic signal - The remote control for the selected group is programmed in
  - 1 long acoustic signal - The remote control for the selected group is deleted

### 1.1.2 Programming/deleting the special function "close without locking"

The special function "close without locking" allows the lift-slide sash to be opened manually.

1. Scheme C: Close and lock the secondary sash
2. Move the lift-slide sash<sup>1)</sup> to the end position (see operating instructions for the lift-slide drive).
3. Press the "PROG" button<sup>1)</sup> (LED flashes green)
4. Press and hold button for 4 seconds<sup>1)</sup> (1 brief signal, then 2 brief signals audible)
5. Release the button
6. Press and hold down remote control button 1
7. 1 short acoustic signal - Special function is programmed in  
1 long acoustic signal - Special function is deleted

<sup>1)</sup> with scheme C = primary sash

#### Operation of the special function



With Scheme C the button on the primary sash must be activated. Only the primary sash opens or closes.

- Close without locking: Briefly tap the button on the lift-slide sash once
- Close with locking: Briefly tap the button on the lift-slide sash twice
- Stopping the lift-slide sash during closing: Briefly tap the button on the lift-slide sash twice