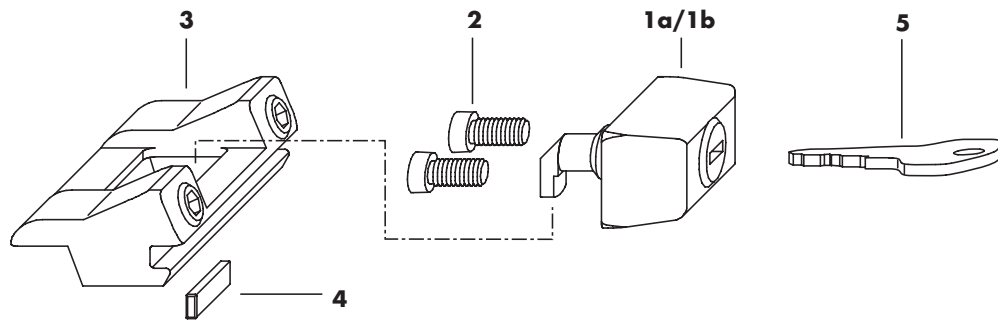
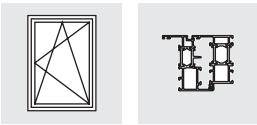




# Accessories ALU

## Turning lock ALU

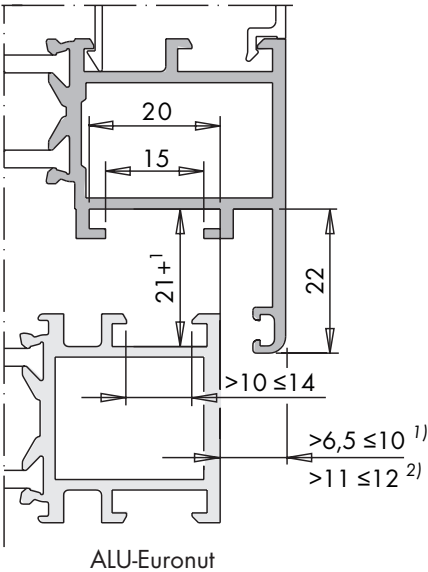


Pos.	Qty.	Description			Material no.		Material no.
	•	Turning lock ALU <sup>1)</sup>	silver	1	MMDS0010-525010	50	MMDS0010-525050
			brown	1	882344	50	270585
			white RAL 9016	1	882320	50	270554
	•	Turning lock ALU USH 12mm <sup>2)</sup>	Black	1	882337	50	270578
			silver	1	MMDS0040-525010	50	MMDS0040-525050
			brown	1	MMDS0040-533010	50	MMDS0040-533050
			white RAL 9016	1	MMDS0040-504010	50	MMDS0040-504050
1a	1	-	Turning Lock ALU				
1b	-	1	Turning Lock ALU USH 12MM				
2	2	2	Set screw M5 x 12				
3	1	1	Lock				
4	1	-	Packer <sup>3)</sup>				
5	1	1	Key 2W 145				

1) for rebate height > 6,5 ≤ 10 mm

2) for rebate height > 11 ≤ 12 mm

3) for rebate height > 6,5 ≤ 7,5 mm



This dimensional specification of the eurogroove for aluminium windows and doors is valid for the accessories to the SIEGENIA fittings.

In addition the system manufacturers specifications must be observed.

Installation instructions  
H48.ZUBHLS002en

H48.ZUBHLS002en/G

## Turning lock ALU - Assembly instructions, Important notes

### Assembly instructions

#### Preparation

Pre drill the holes in the sash for the Turning Lock ALU (1) (Figures 1 and 2) .

#### Sash

Position the Turning Lock ALU (1) in the corresponding holes  $\varnothing 12,5$  (Figure 1) and secure with the set screws (2) (Torque  $2,5 \pm 0,25$  Nm).

#### Frame

**A**  
**B**

Fix the lock (3) in the frame once aligned with the turning lock (1) by tightening the grub screws. For profiles with a rebate height from 6,5 to 7,5 mm insert the packer (4) in the groove on the underside of the lock (3).

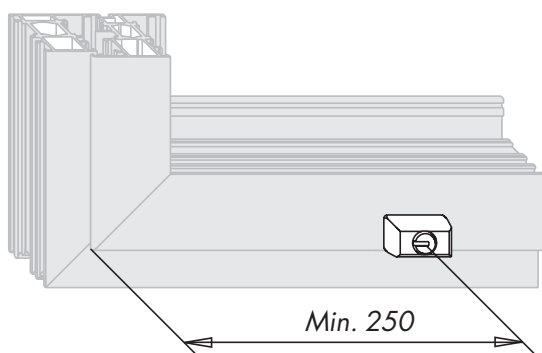


Figure 1

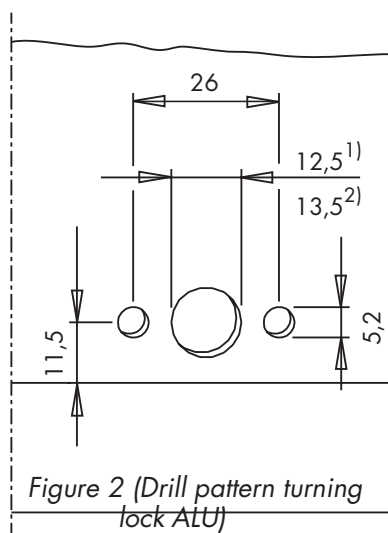


Figure 2 (Drill pattern turning lock ALU)

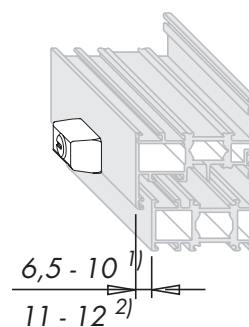


Figure 3

### Important notes

- Please take note of our Product information for windows and doors.
- The specifications for size range given in installation instructions are also valid for the components described in this document.
- The fittings described in this instruction are made of non corroding materials.  
They must not be installed for use in aggressive corrosion promoting air conditions.
- Do not use SIEGENIA-fittings with other parts; otherwise difficulties can arise for which we cannot be held responsible.
- Assemble the components as described in this installation leaflet.
- The surfaces of windows and doors should be treated (i.e. painted) prior to the assembly of the fittings.
- Post-treatment of the surfaces can be detrimental to the function of the fittings.

In this case we are released from the obligations of our guarantee.

### Liability Exclusion

We accept no liability in respect of any damages or malfunctions caused by or to the hardware or the windows fitted with them, as a result of incorrect and inappropriate specifications or other information provided by the customer, failure to follow these instructions, wilful damage or negligence or misuse or alteration or repair of or an exertion of excessive force to the hardware by the user or customer.